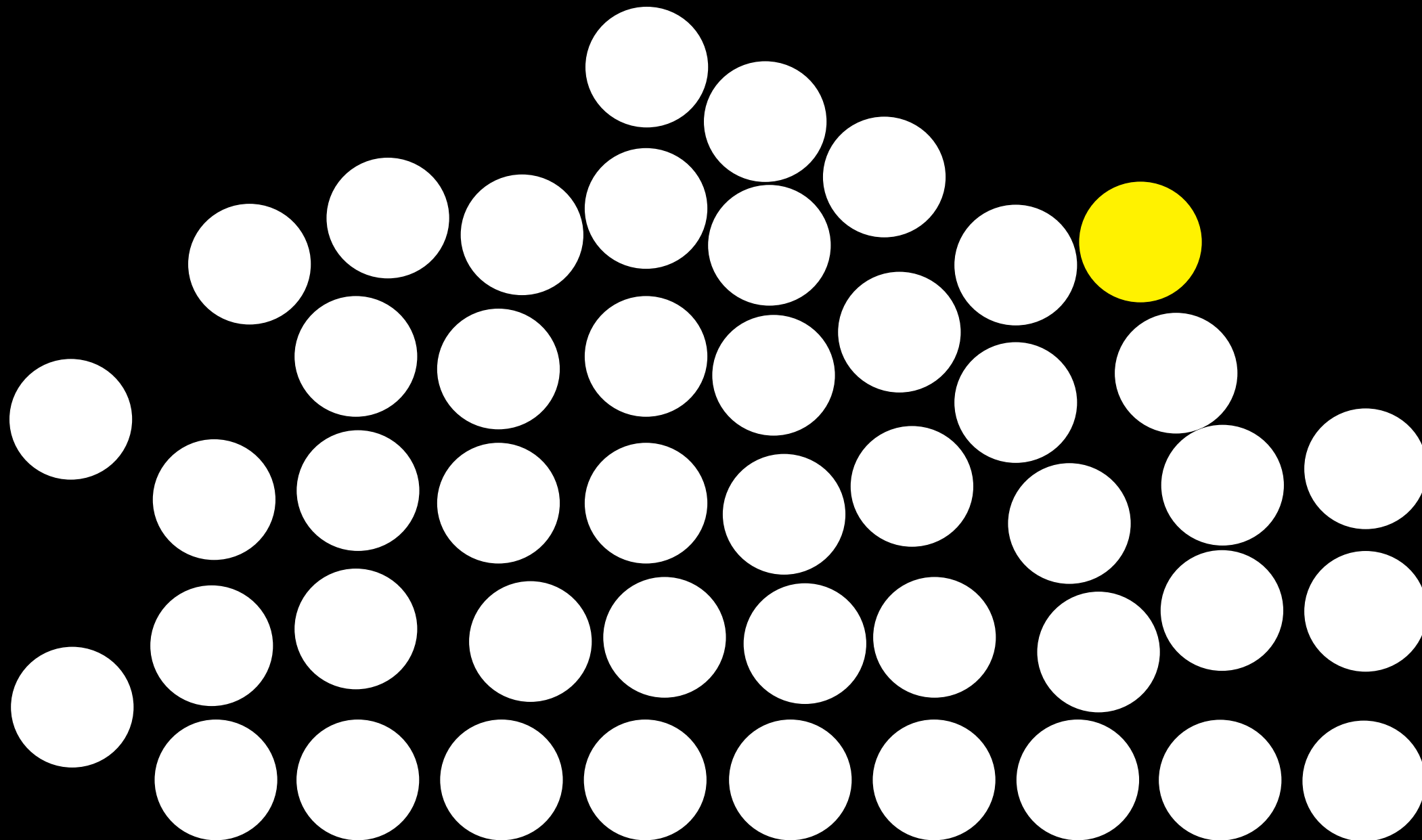


Republic

Import Building

Office Floor Plans



Schedule of Areas

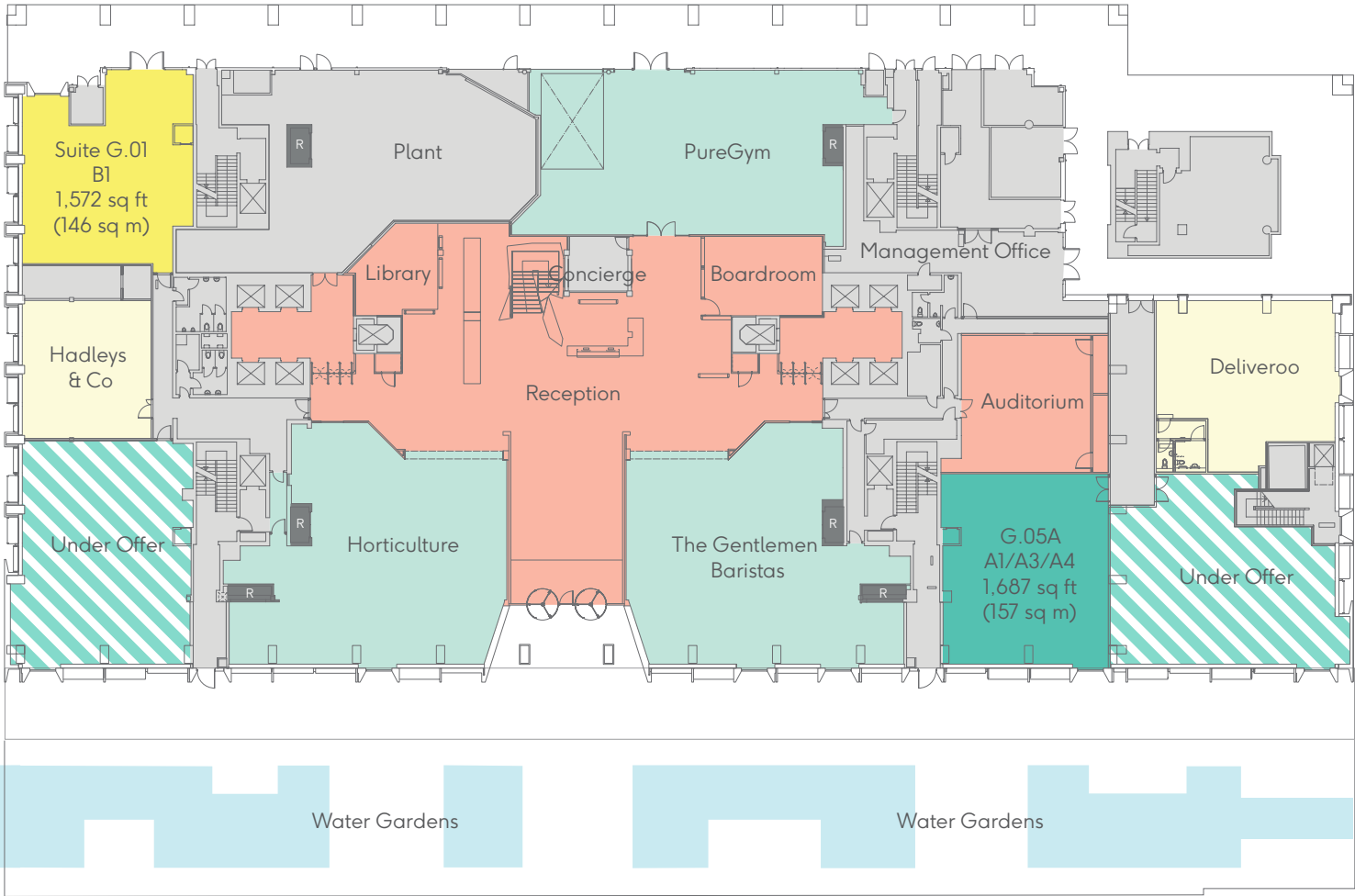
Part 9th (Terrace)	Office	6,254 sq ft	581 sq m	
Part 8th	Office	6,114 sq ft	568 sq m	
Part 7th (Terrace)	Office	13,515 sq ft	1,256 sq m	
6th	Office	32,372 sq ft	3,007 sq m	
5th	Office	32,244 sq ft	2,996 sq m	
4th	Office	32,532 sq ft	3,022 sq m	
3rd	Office	32,762 sq ft	3,044 sq m	
2nd	Office		Let	
1st	Office		Let	
Ground	Office Retail Unit G.05A	1,572 sq ft 1,687 sq ft	146 sq m 157 sq m	
Total Office		157,365 sq ft	14,620 sq m	

- Available Office ●
- Available Retail ●
- Under Offer Office ▨
- Under Offer Retail ▨
- Let Office ●
- Let Retail ●
- Atrium ●
- Reception / Tenant Amenities ●
- Core ●

Ground

Office: 1,572 sq ft / 146 sq m

Retail Unit G.05A: 1,687 sq ft / 157 sq m

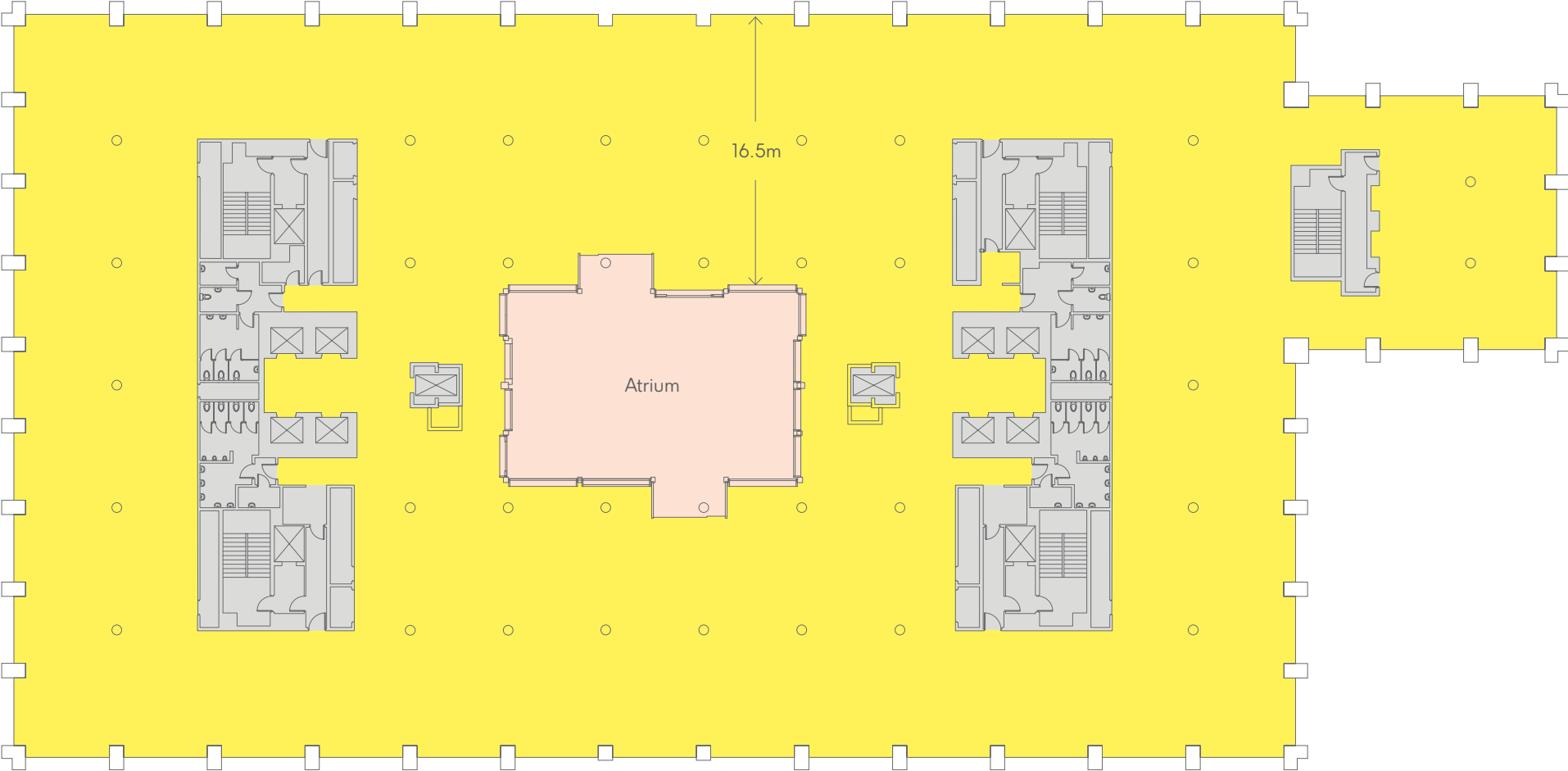


- Available Office ●
- Available Retail ●
- Under Offer Office
- Under Offer Retail
- Let Office ●
- Let Retail ●
- Atrium ●
- Reception / Tenant Amenities ●
- Core ●



3rd-6th

Office: Circa 32,672 sq ft / 3,044 sq m

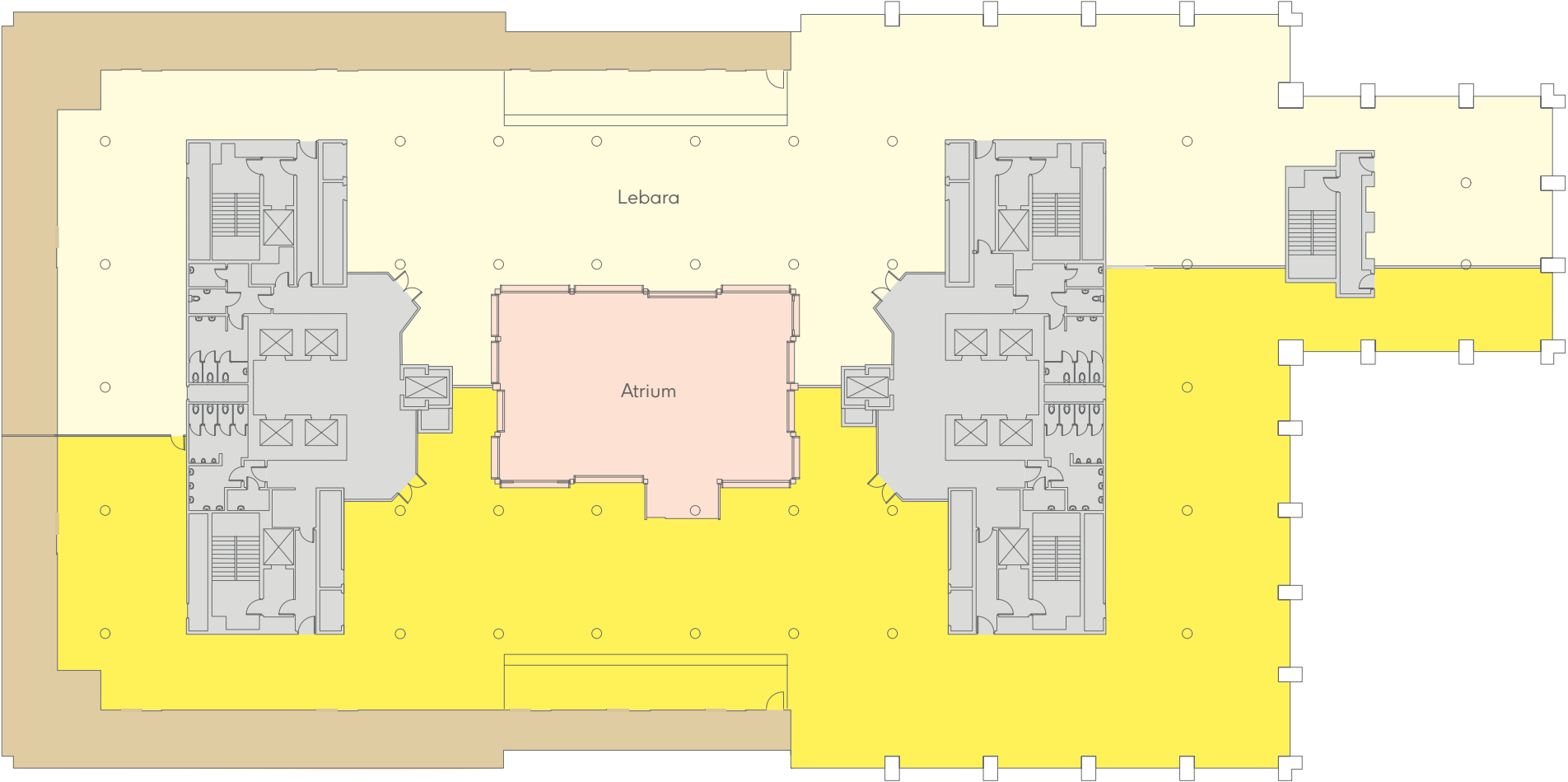


- Available Office ●
- Atrium ●
- Core ●



Part 7th (Terrace)

Office: 13,515 sq ft / 1,256 sq m

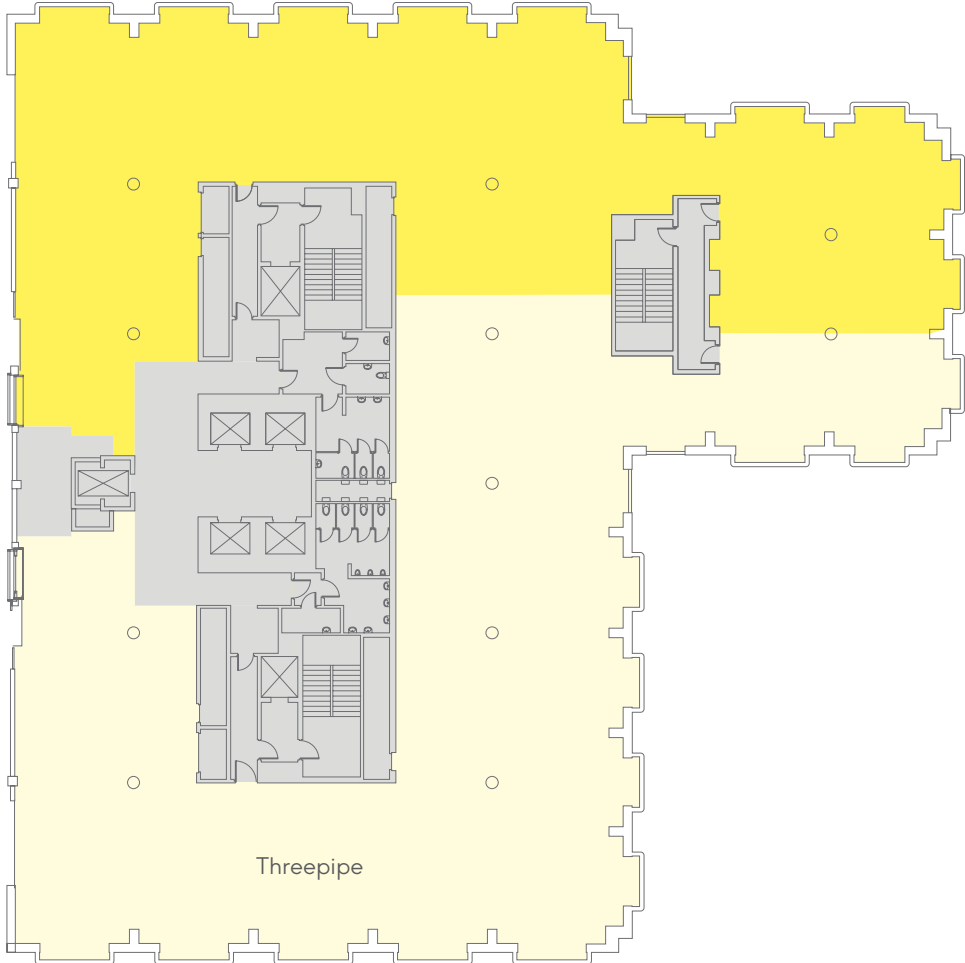


Available Office	●	Terrace	●
Let Office	●	Core	●
Atrium	●		



Part 8th

Office: 6,114 sq ft / 568 sq m

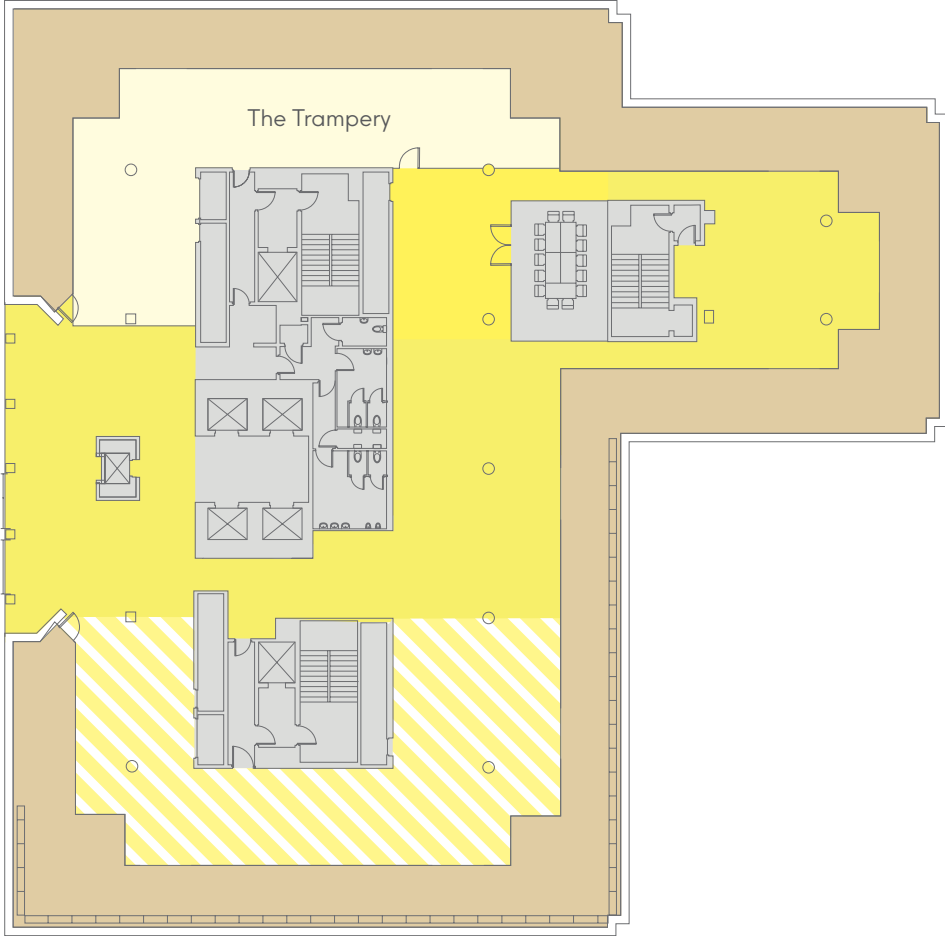


- Available Office ●
- Let Office ●
- Core ●



Part 9th (Terrace)

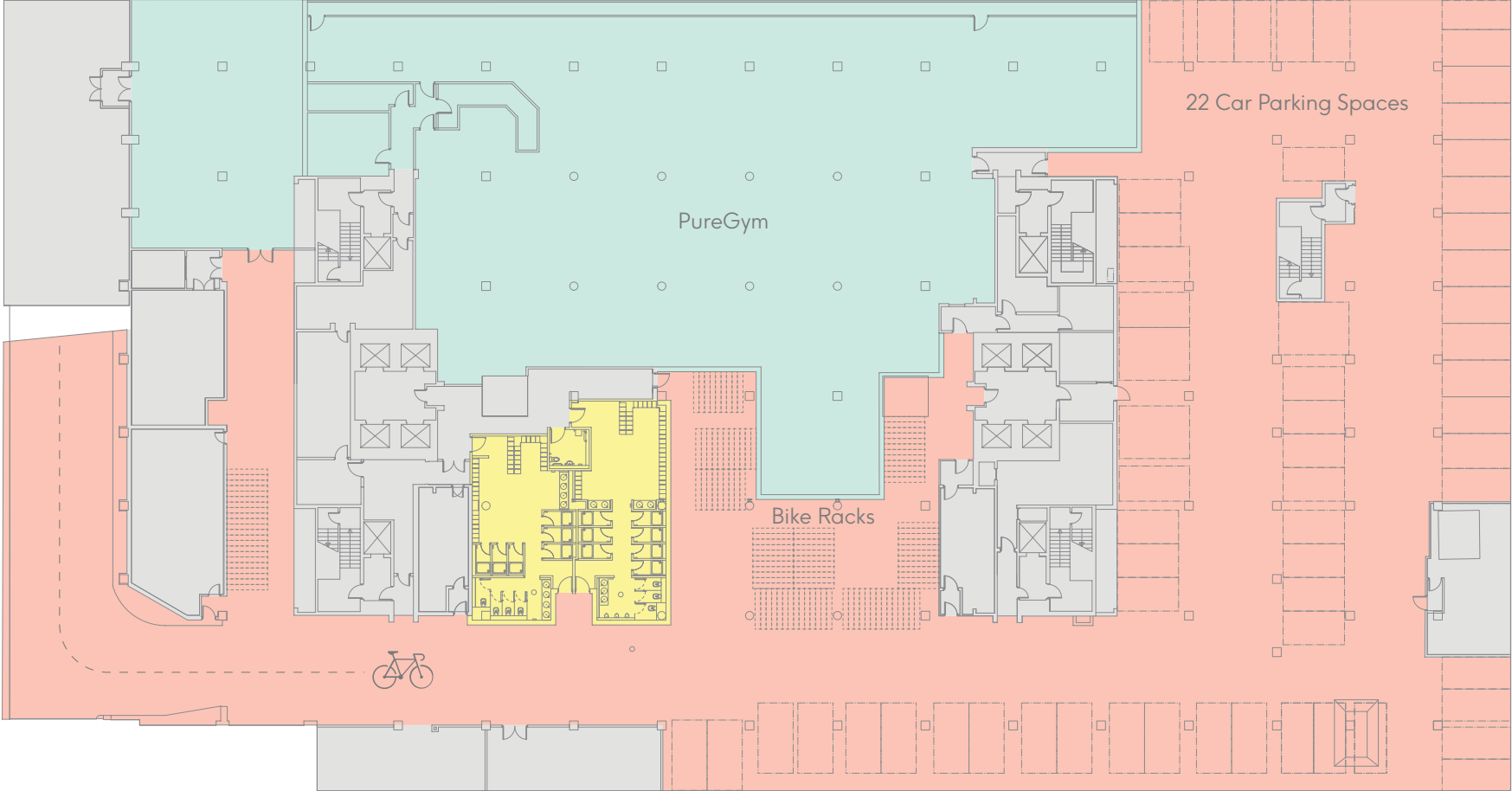
Office: 6,254 sq ft / 581 sq m



Available Office	●	Terrace	●
Let Office	●	Core	●
Under Offer Office	▨		



Basement



- Showers ●
- Let Retail ●
- Reception / Tenant Amenities ●



Contact Details

Office

CBRE

Dan Hanmer
DL +44 (0) 20 7182 3646
M +44 (0) 7985 876 209
dan.hanmer@cbre.com

Luke Hacking
DL +44 (0) 20 7182 2169
M +44 (0) 7951 224 060
luke.hacking@cbre.com

Simon Conie
DL +44 (0) 20 7182 3403
M +44 (0) 7702 974 333
simon.conie@cbre.com

Hannah Grint
DL +44 (0) 20 3257 6341
M +44 (0) 7545 868 543
hannah.grint@cbre.com

Allsop LLP

James Neville
DL +44 (0) 20 7588 4433
M +44 (0) 7789 658 540
james.neville@allsop.co.uk

Rachel Lockhart
DL +44 (0) 20 7588 4433
M +44 (0) 7786 656 661
rachel.lockhart@allsop.co.uk

Tom Nicoll
DL +44 (0) 20 7588 4433
M +44 (0) 7734 680 412
tom.nicoll@allsop.co.uk

Retail

CBRE

Will Brown
DL +44 (0) 20 7182 2785
M +44 (0) 7870 637 267
will.brown@cbre.com

Eloise Ladkin
DL +44 (0) 20 3257 6107
M +44 (0) 7469 375 720
eloise.ladkin@cbre.com

CF Commercial

Craig Fisher
DL +44 (0) 20 3216 3911
M +44 (0) 7947 534 589
craig@cfcommercial.co.uk

Max Taylor-Smith
DL +44 (0) 20 3216 3912
M +44 (0) 7765 251 016
max@cfcommercial.co.uk

Fund Manager

LaSalle Investment Management

Developer

Trilogy

Architects

Studio RHE

Important Notice: 1. Particulars: The particulars are not an offer or contract, nor part of one. You should not rely on statements by Allsop or CBRE in the particulars or by word of mouth or in writing ("information") as being factually accurate about the property, its condition or its value. Neither CBRE or Allsop has any authority to make any representations about the property and accordingly any information give in entirety without responsibility on the part of the agents, seller (s) or lessor (s). 2. Photos etc: The photographs show only certain parts of the property as they appeared at the time they were taken. Areas, measurements and distances given are approximate only. 3. Regulations etc: Any references to alterations to, or use of, any part of the property does not mean that any necessary planning, building regulations or other consent has been obtained. A buyer or lessee must find out by inspection or in other ways that these matters have been properly dealt with and that all information is correct. CGIs are for indicative purposes only and may be subject to change. Allsop is the trading name of Allsop LLP, a limited liability partnership registered in England and Wales with registered company number OC315531. CBRE is the trading name of CBRE Limited, a limited liability partnership registered in England and Wales with registered company number 3536032. October 2018.