

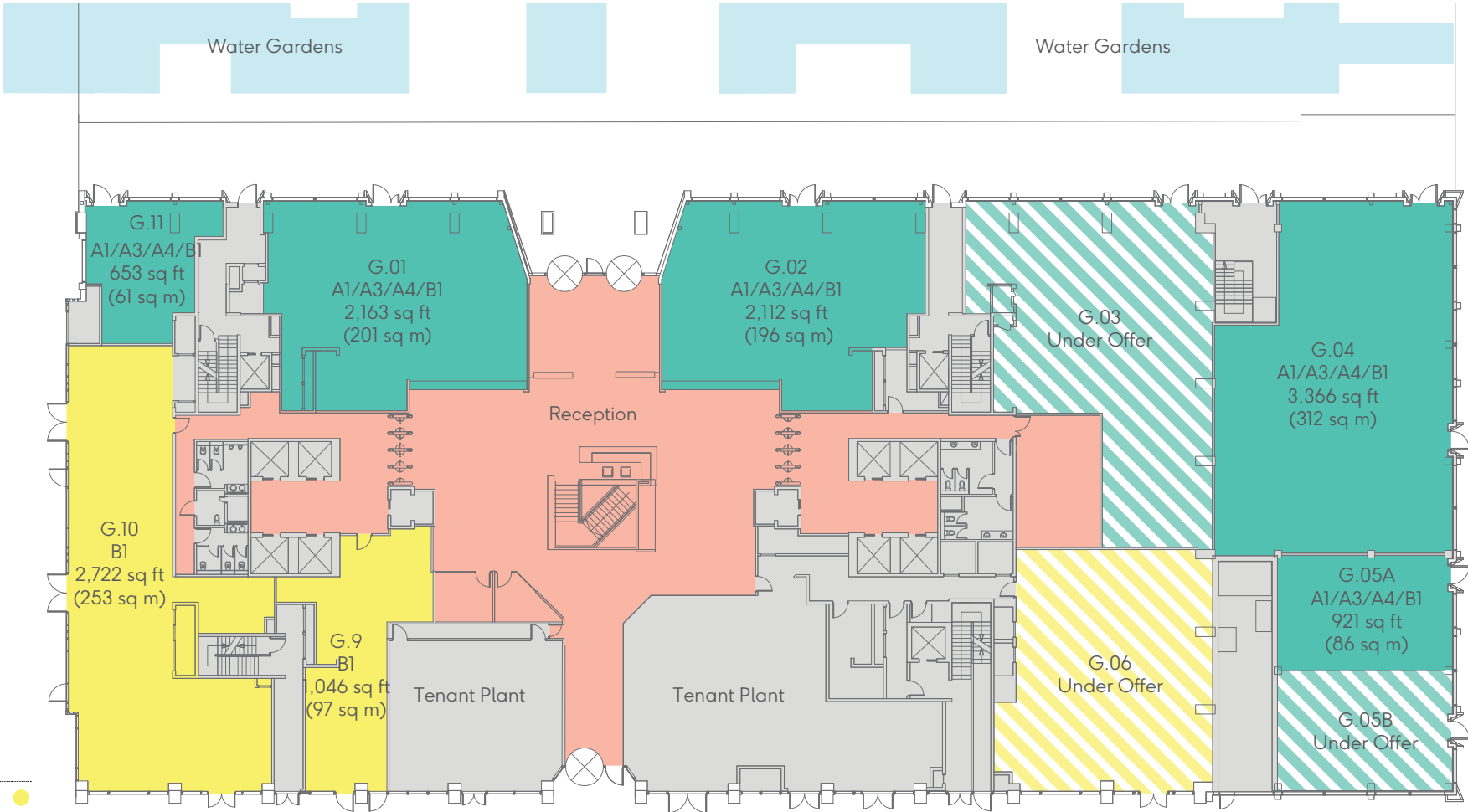
Schedule of Areas

9th (Terrace)	Office	5,463 sq ft	508 sq m	
8th	Office	9,827 sq ft	913 sq m	
7th (Terrace)	Office 7.01 Office 7.02	8,297 sq ft 11,781 sq ft	771 sq m 1,094 sq m	
6th	Office	24,203 sq ft	2,249 sq m	
5th	Office	24,201 sq ft	2,248 sq m	
4th	Office	21,966 sq ft	2,041 sq m	
3rd	Office	21,984 sq ft	2,042 sq m	
2nd	Office	22,007 sq ft	2,045 sq m	
1st	Office 1.01	2,786 sq ft	259 sq m	
	Office 1.02	2,001 sq ft	186 sq m	
	Office 1.03	3,195 sq ft	297 sq m	
	Office 1.04	3,850 sq ft	358 sq m	
	Office 1.05	2,621 sq ft	243 sq m	
	Office 1.06	11,478 sq ft	1,066 sq m	
Ground	Office	3,768 sq ft	350 sq m	
	Retail	9,215 sq ft	857 sq m	
Total Office		179,428 sq ft	16,670 sq m	

Available Office	●
Under Offer Office	▨
Available Retail	●
Under Offer Retail	▨
Atrium	●
Reception / Tenant Amenities	●
Communal Area	●
Terrace	●
Core	●

Ground

Office: 10,707 sq ft / 995 sq m

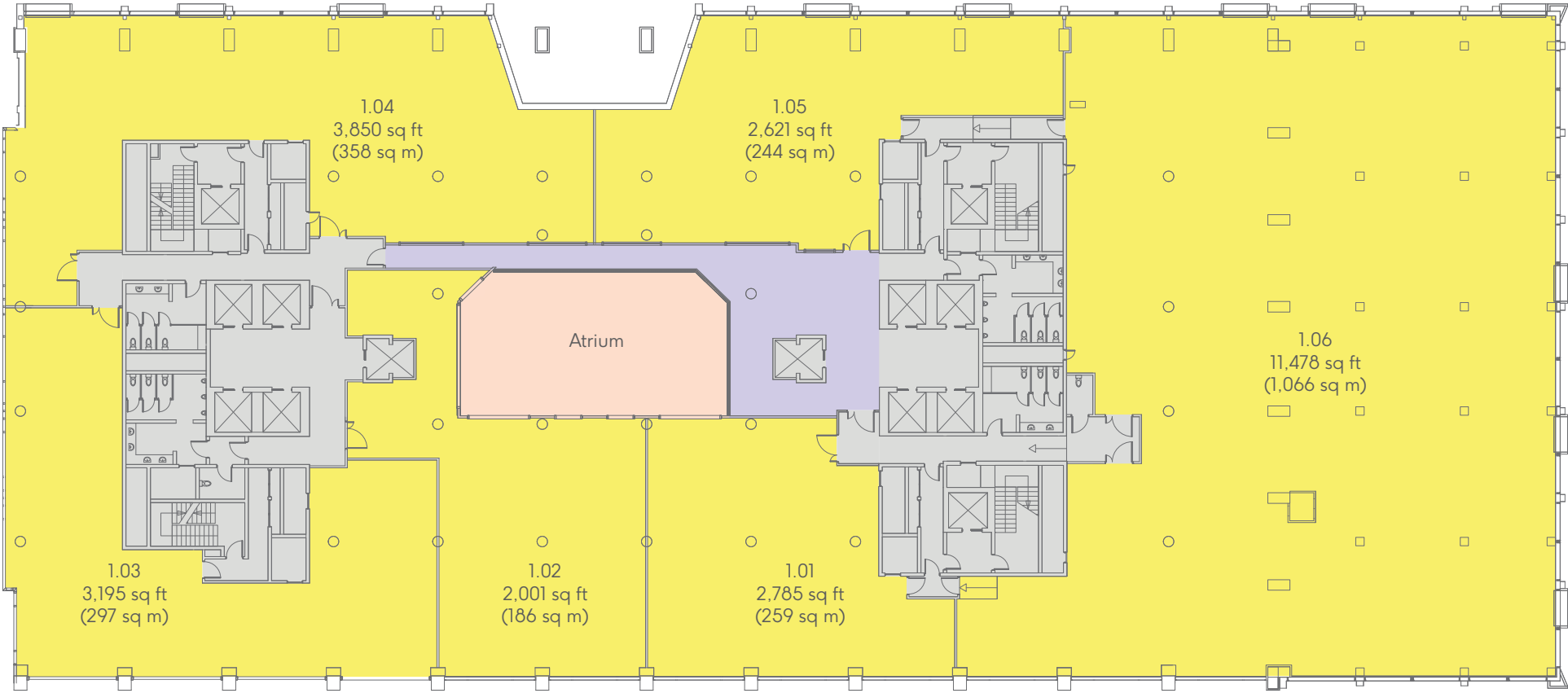


- Available Office
- Under Offer Office
- Available Retail
- Under Offer Retail
- Reception / Tenant Amenities
- Core



1st

Office: 25,963 sq ft / 2,412 sq m

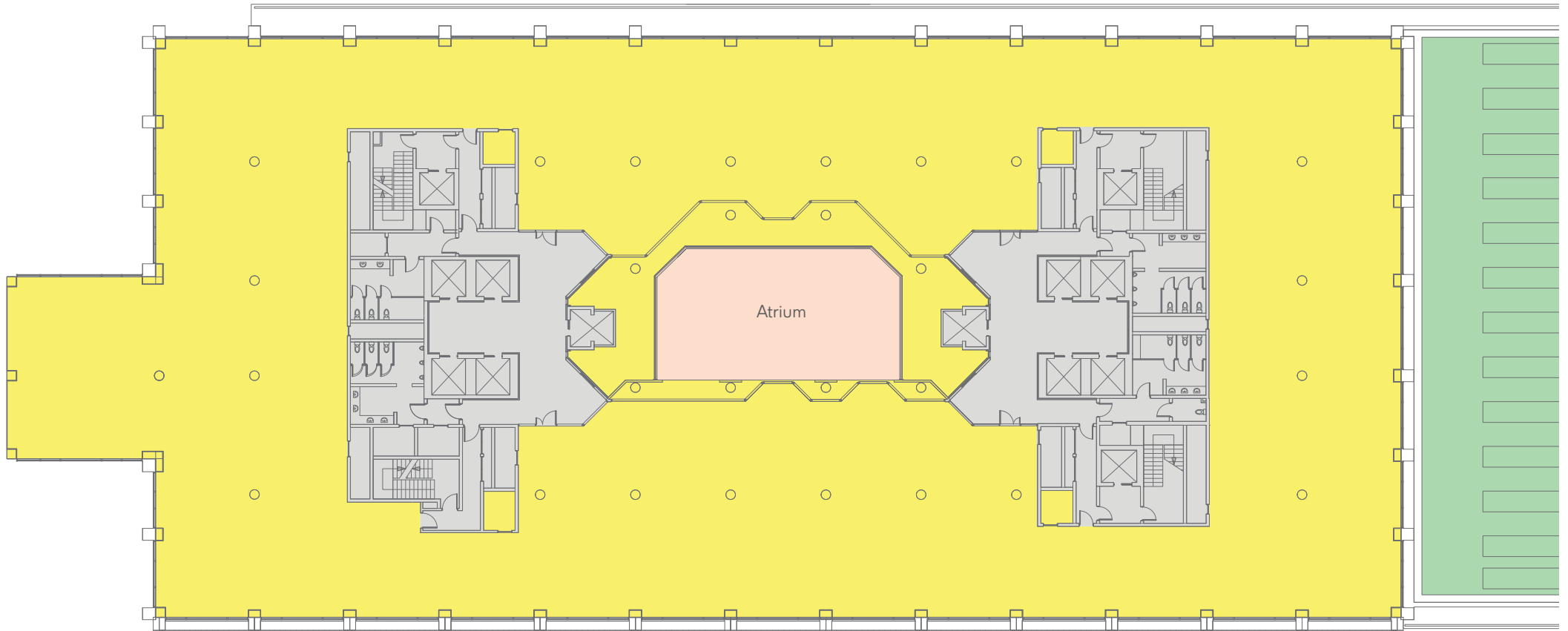


- Available Office ●
- Atrium ●
- Communal Area ●
- Core ●



2nd

Office: 25,963 sq ft / 2,412 sq m

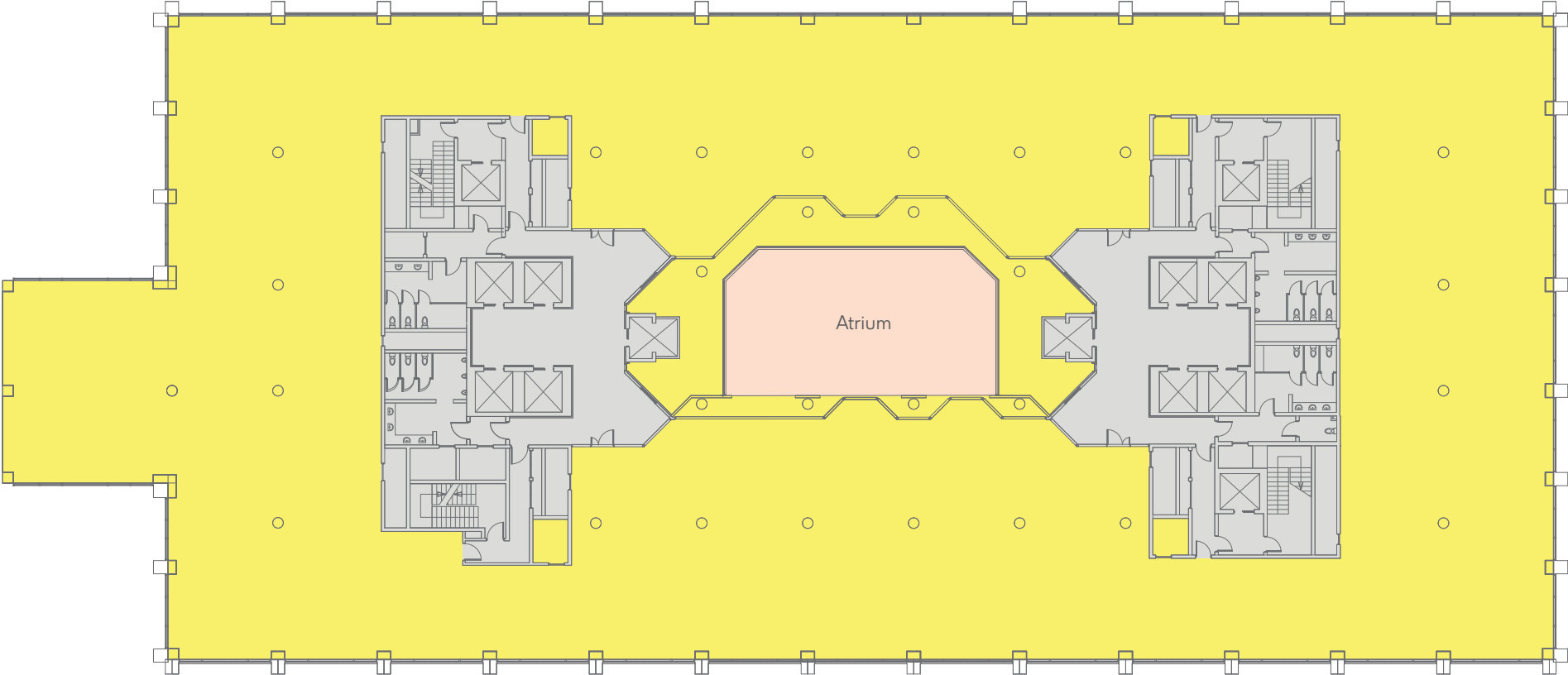


- Available Office ●
- Atrium ●
- Green Roof ●
- Core ●



3rd

Office: 25,963 sq ft / 2,412 sq m

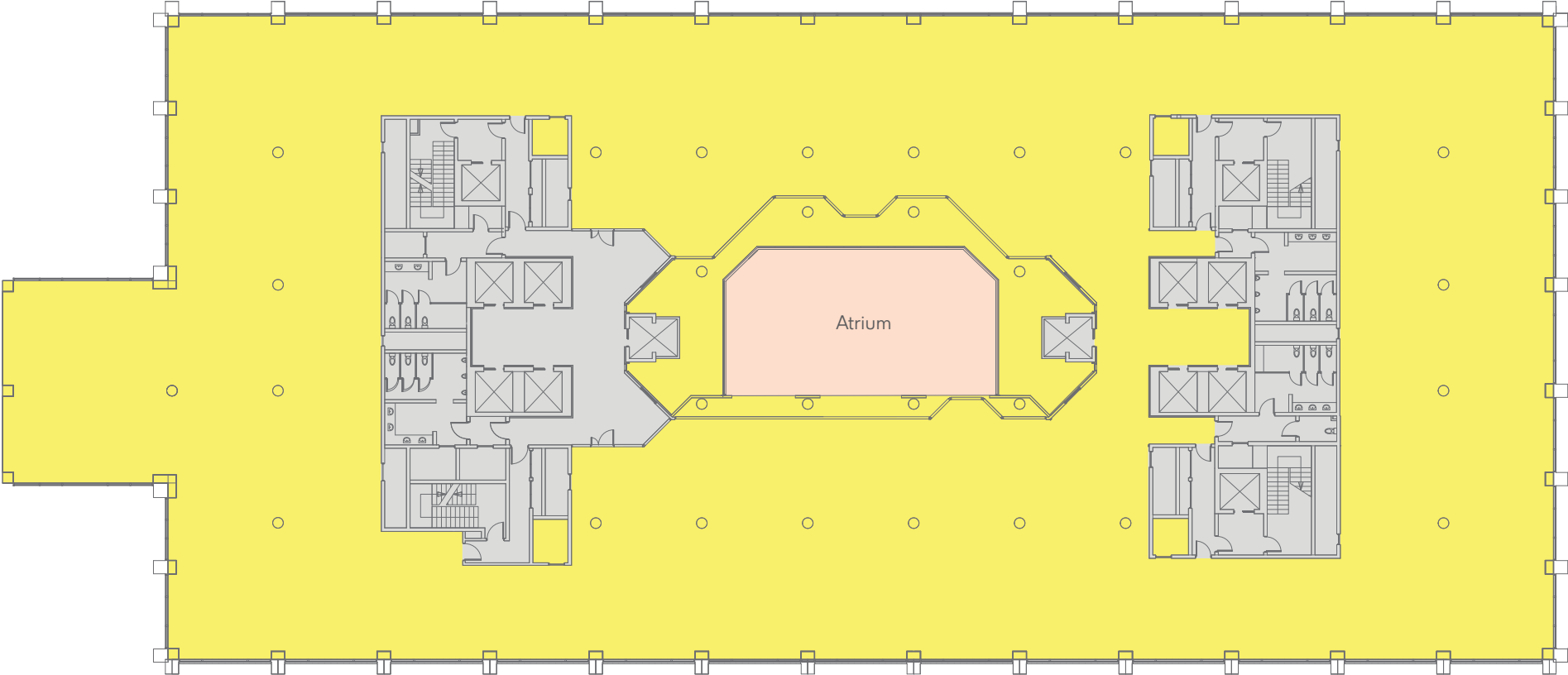


- Available Office ●
- Atrium ●
- Core ●



4th

Office: 25,963 sq ft / 2,412 sq m

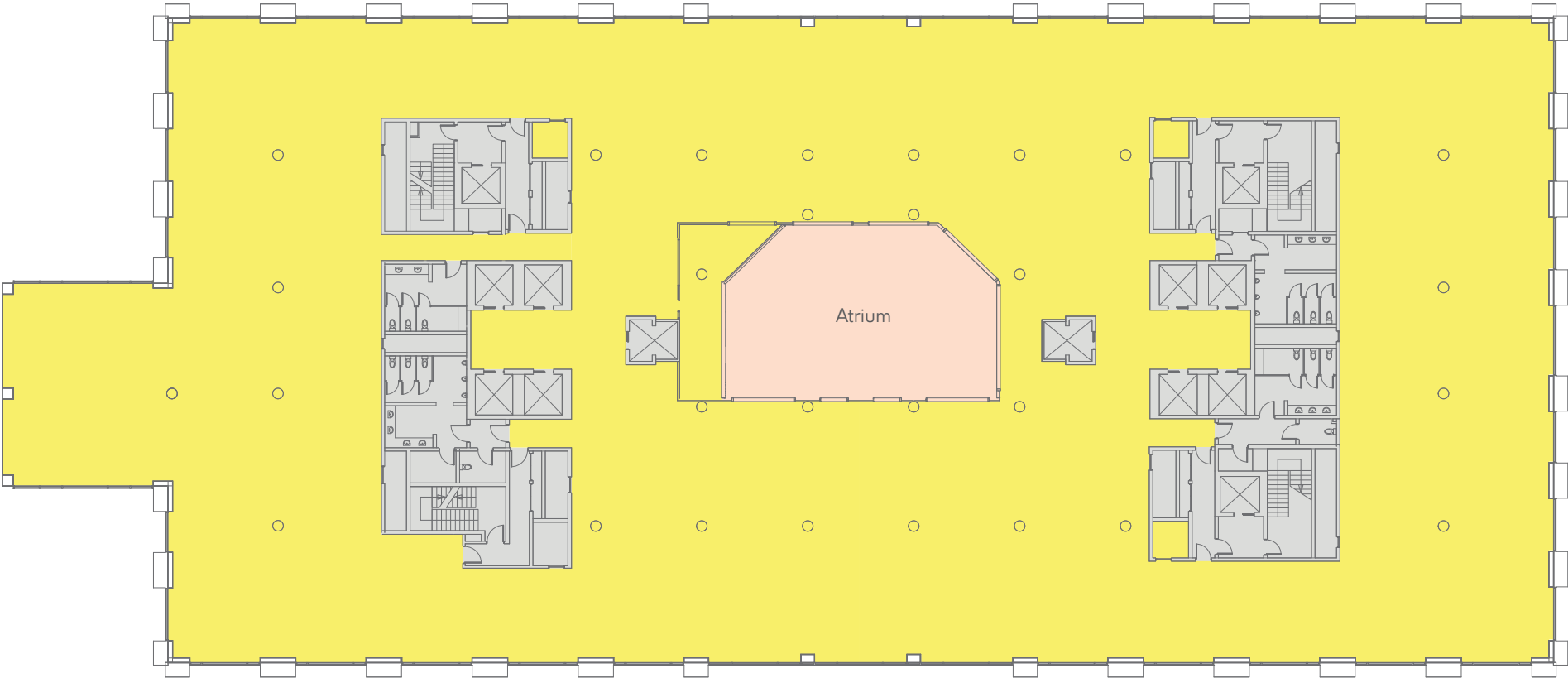


- Available Office ●
- Atrium ●
- Core ●



5th

Office: 24,206 sq ft / 2,249 sq m

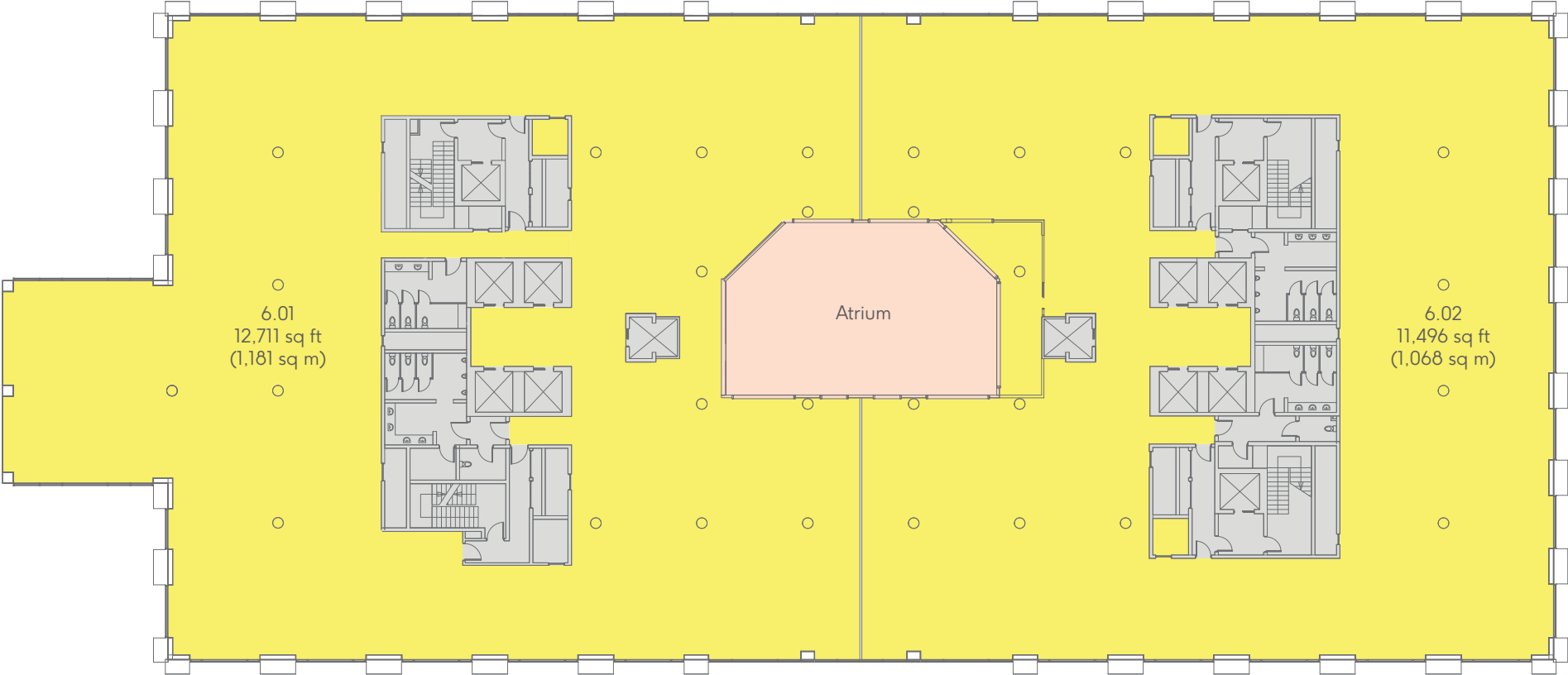


- Available Office ●
- Atrium ●
- Core ●



6th

Office: 24,207 sq ft / 2,249 sq m

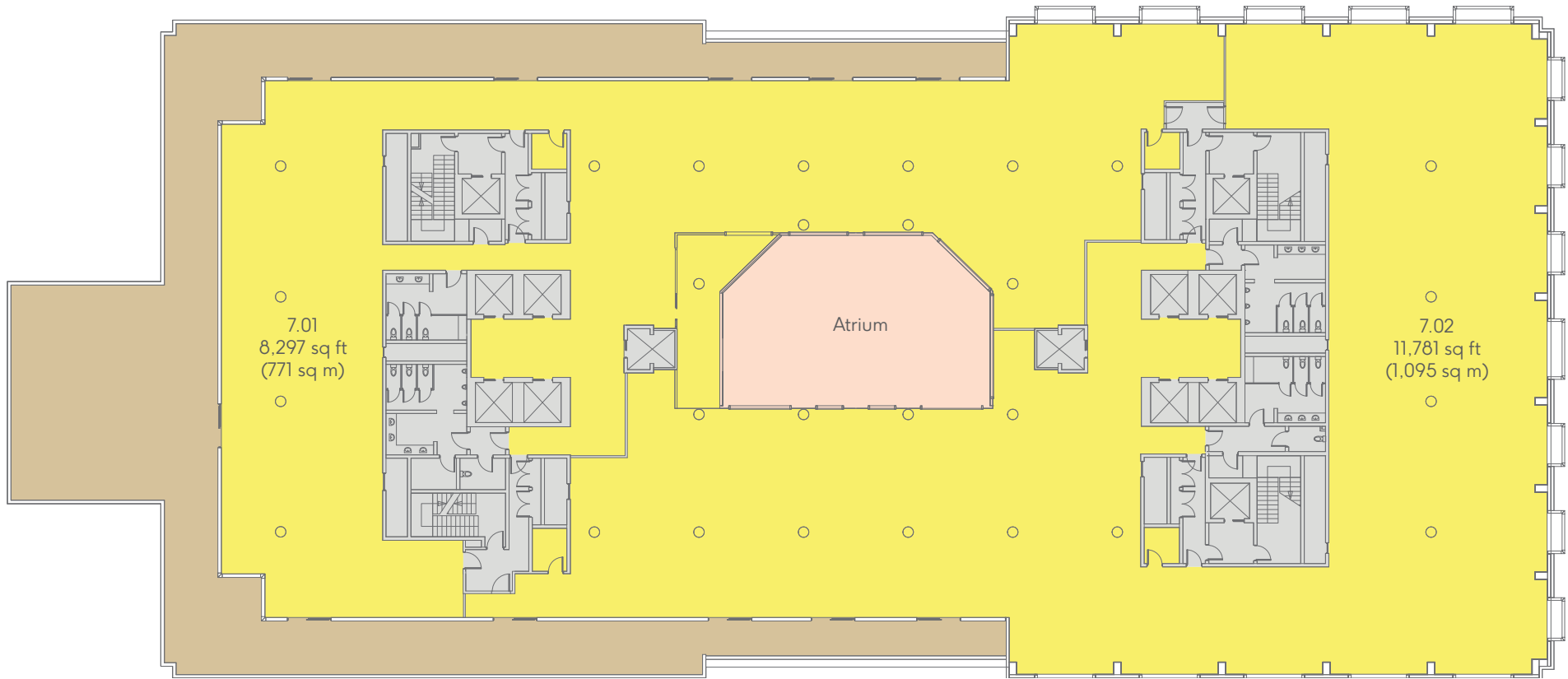


- Available Office ●
- Atrium ●
- Core ●



7th (Terrace)

Office: 19,686 sq ft / 1,829 sq m

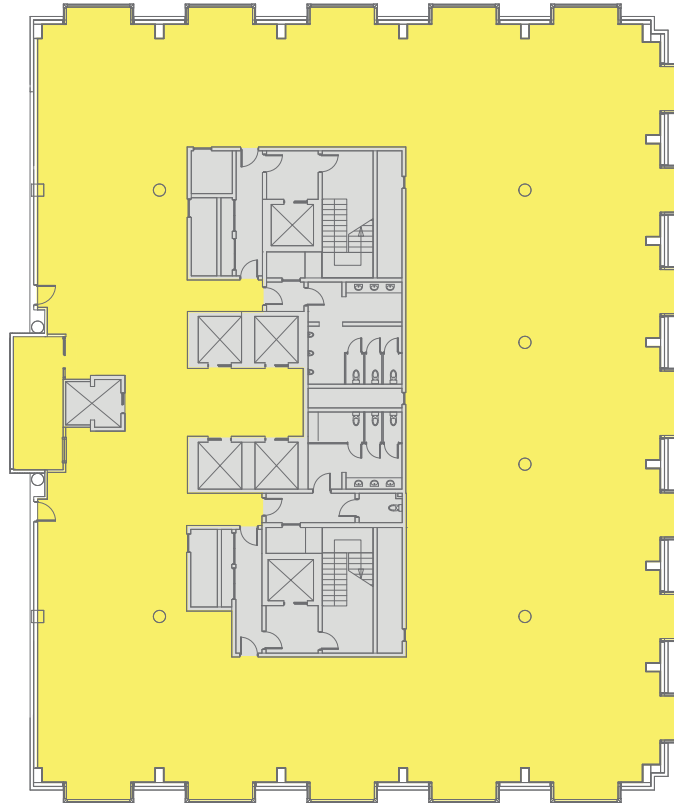


- Available Office
- Atrium
- Terrace
- Core



8th

Office: 9,819 sq ft / 912 sq m

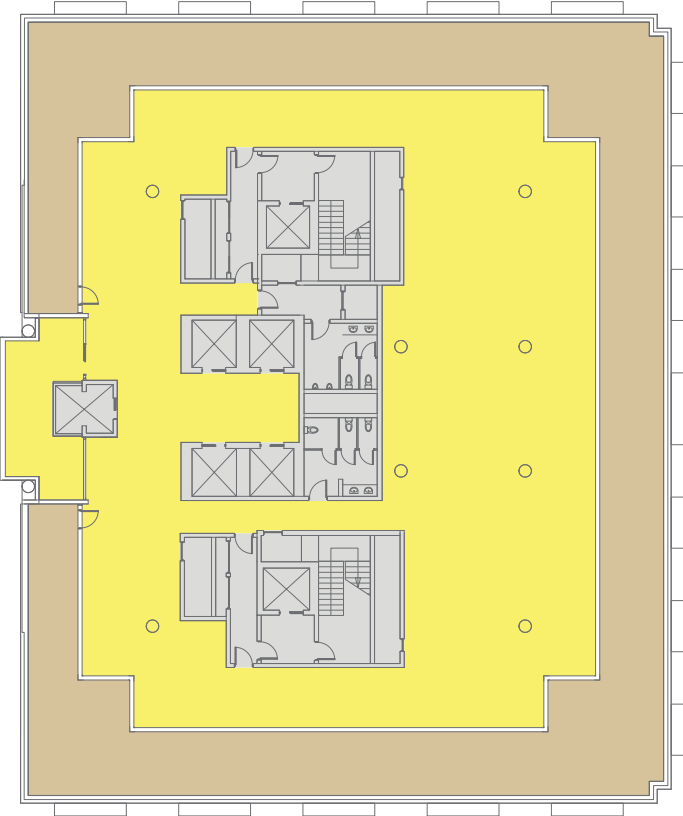


Available Office ●
Core ●



9th (Terrace)

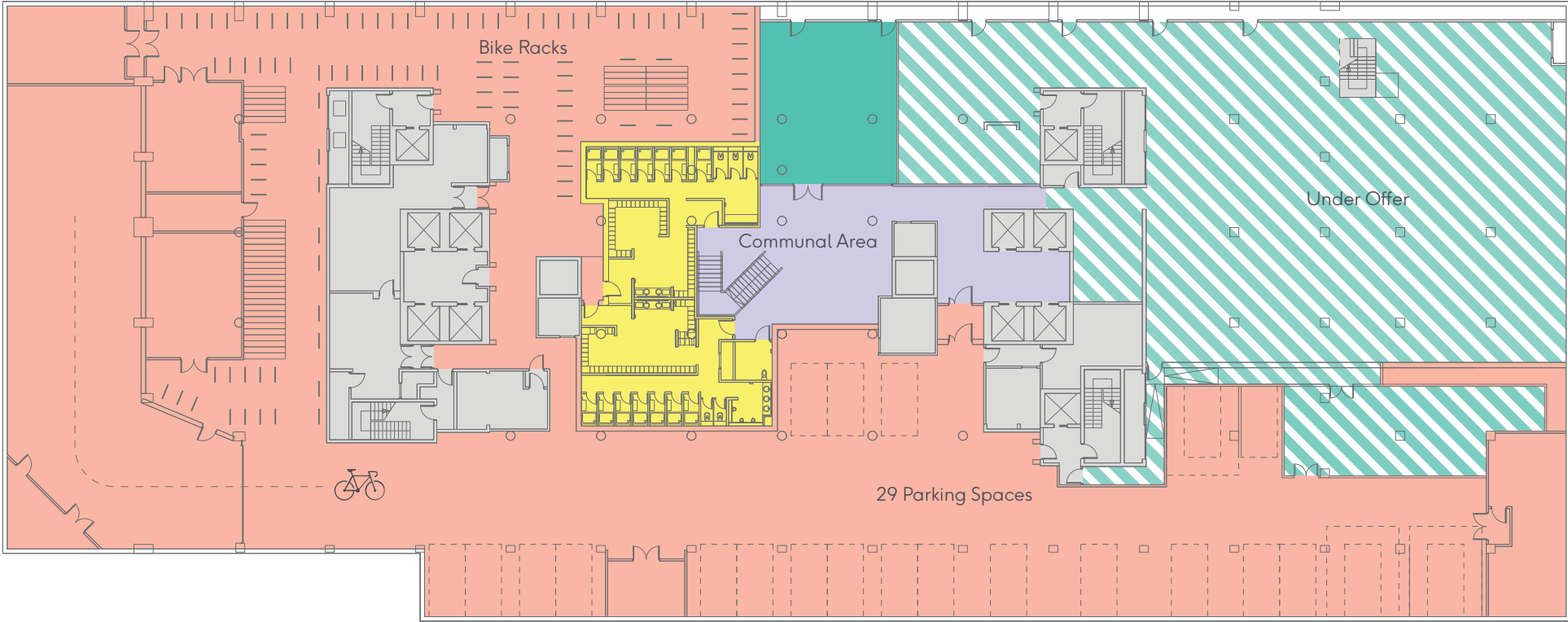
Office: 5,354 sq ft / 324 sq m



- Available Office ●
- Terrace ●
- Core ●



Basement



- Available Retail
- Under Offer Retail / Event Space
- Showers
- Reception / Tenant Amenities
- Communal Area
- Core



Contact Details

Office

CBRE

Simon Conie
DL +44 (0) 20 7182 3403
M +44 (0) 7702 974 333
simon.conie@cbre.com

—
Luke Hacking
DL +44 (0) 20 7182 2169
M +44 (0) 7951 224 060
luke.hacking@cbre.com

—
Hannah Grint
DL +44 (0) 20 3257 6341
M +44 (0) 7545 868 543
hannah.grint@cbre.com

Allsop LLP

James Neville
DL +44 (0) 20 7588 4433
M +44 (0) 7789 658 540
james.neville@allsop.co.uk

—
Nick Russell-Smith
DL +44 (0) 20 7588 4433
M +44 (0) 7827 022 832
nick.russell-smith@allsop.co.uk

—
Tom Nicoll
DL +44 (0) 20 7588 4433
M +44 (0) 7734 680 412
tom.nicoll@allsop.co.uk

Retail

CBRE

Charlie Reid
DL +44 (0) 20 7182 2473
M +44 (0) 7896 072 899
charlie.reid@cbre.com

—
Will Brown
DL +44 (0) 20 7182 2785
M +44 (0) 7870 637 267
will.brown@cbre.com

—
Eloise Ladkin
DL +44 (0) 20 3257 6107
M +44 (0) 7469 375 720
eloise.ladkin@cbre.com

CF Commercial

Craig Fisher
DL +44 (0) 20 3216 3911
M +44 (0) 7947 534 589
craig@cfcommercial.co.uk

—
Max Taylor-Smith
DL +44 (0) 20 3216 3912
M +44 (0) 7765 251 016
max@cfcommercial.co.uk

Fund Manager

LaSalle Investment Management

Developer

Trilogy

Architects

Studio RHE

Important Notice: 1. Particulars: The particulars are not an offer or contract, nor part of one. You should not rely on statements by Allsop or CBRE in the particulars or by word of mouth or in writing ("information") as being factually accurate about the property, its condition or its value. Neither CBRE or Allsop has any authority to make any representations about the property and accordingly any information given in entirety without responsibility on the part of the agents, seller (s) or lessor (s). 2. Photos etc: The photographs show only certain parts of the property as they appeared at the time they were taken. Areas, measurements and distances given are approximate only. 3. Regulations etc: Any references to alterations to, or use of, any part of the property does not mean that any necessary planning, building regulations or other consent has been obtained. A buyer or lessee must find out by inspection or in other ways that these matters have been properly dealt with and that all information is correct. CGIs are for indicative purposes only and may be subject to change. Allsop is the trading name of Allsop LLP, a limited liability partnership registered in England and Wales with registered company number OC315531. CBRE is the trading name of CBRE Limited, a limited liability partnership registered in England and Wales with registered company number 3536032. August 2019.