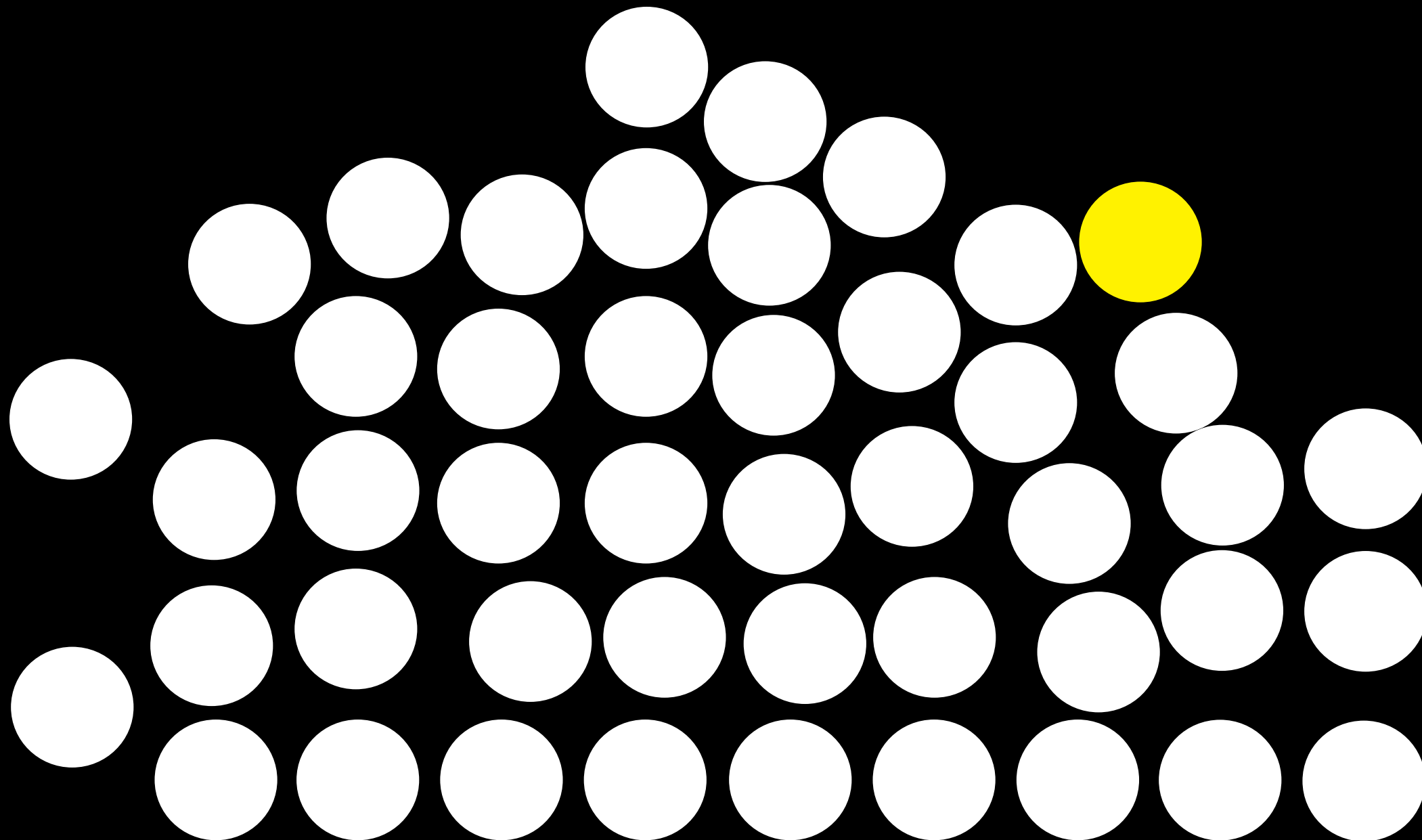


Republic

Import Building

Office Floor Plans



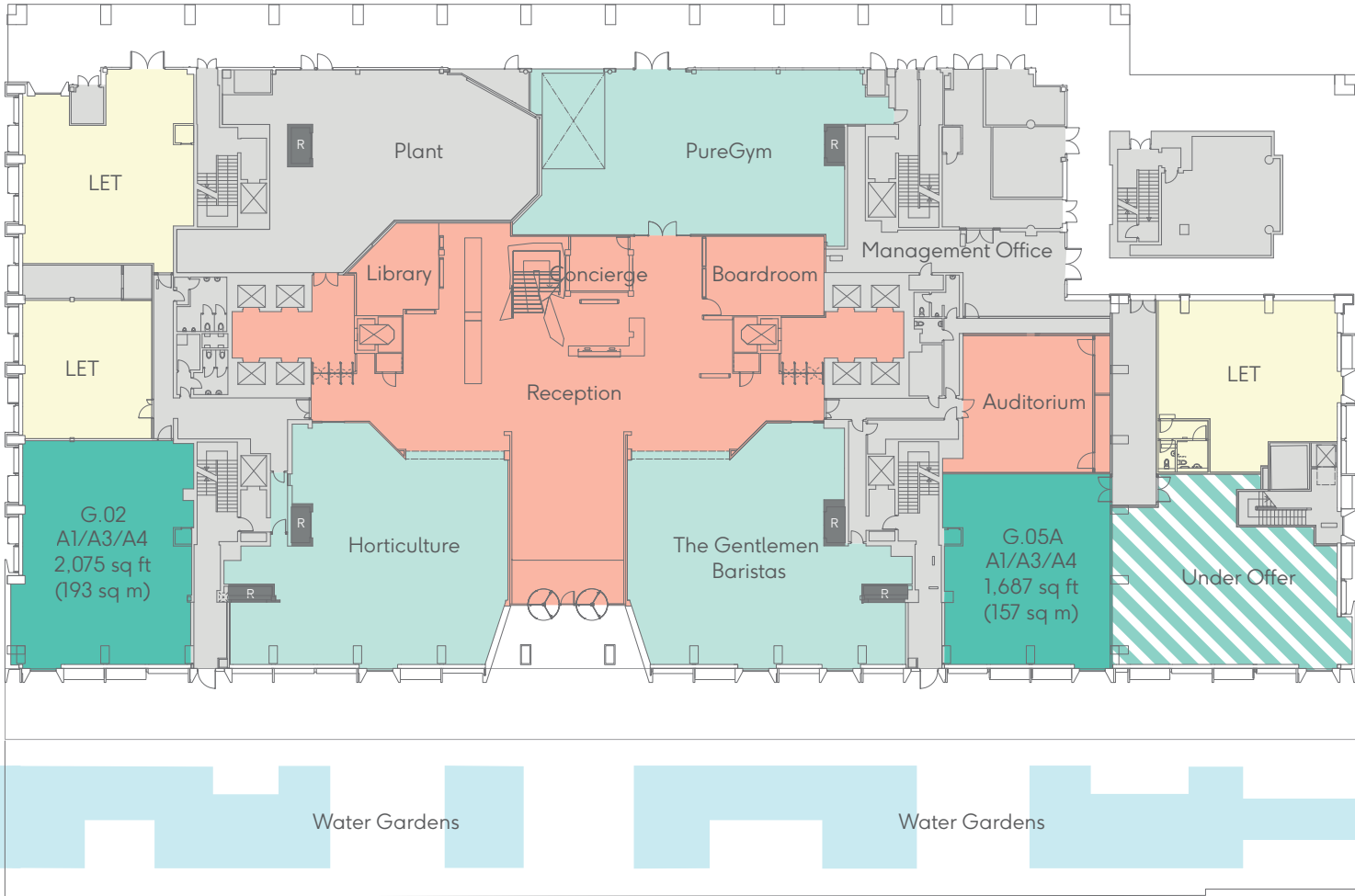
Schedule of Areas

9th (Terrace)	Office	9,171 sq ft	852 sq m	
Part 8th	Office	6,114 sq ft	568 sq m	
Part 7th (Terrace)	Office	13,515 sq ft	1,256 sq m	
6th	Office	32,372 sq ft	3,007 sq m	
5th	Office	15,877 sq ft	1,475 sq m	
	Studios at Republic		Let	
	Studio 1		Let	
	Studio 2	4,057 sq ft	377 sq m	
	Studio 3	4,833 sq ft	449 sq m	
	Studio 4	2,766 sq ft	257 sq m	
4th	Office	32,532 sq ft	3,022 sq m	
3rd	Office		Let	
2nd	Office		Let	
1st	Office		Let	
Ground	Office		Let	
	Retail Unit G.02	2,075 sq ft	193 sq m	
	Retail Unit G.05A	1,687 sq ft	157 sq m	
Total Office		117,885 sq ft	10,951 sq m	
Total Studios		11,656 sq ft	1,083 sq m	

Available Office	●
Available Retail	●
Under Offer Retail	▨
Let Office	●
Let Retail	●
Atrium	●
Reception / Tenant Amenities	●
Terrace	●
Core	●

Ground

- Retail G.02: 2,075 sq ft / 193 sq m
- Retail G.05A: 1,687 sq ft / 157 sq m
- Retail G.05B: Under Offer



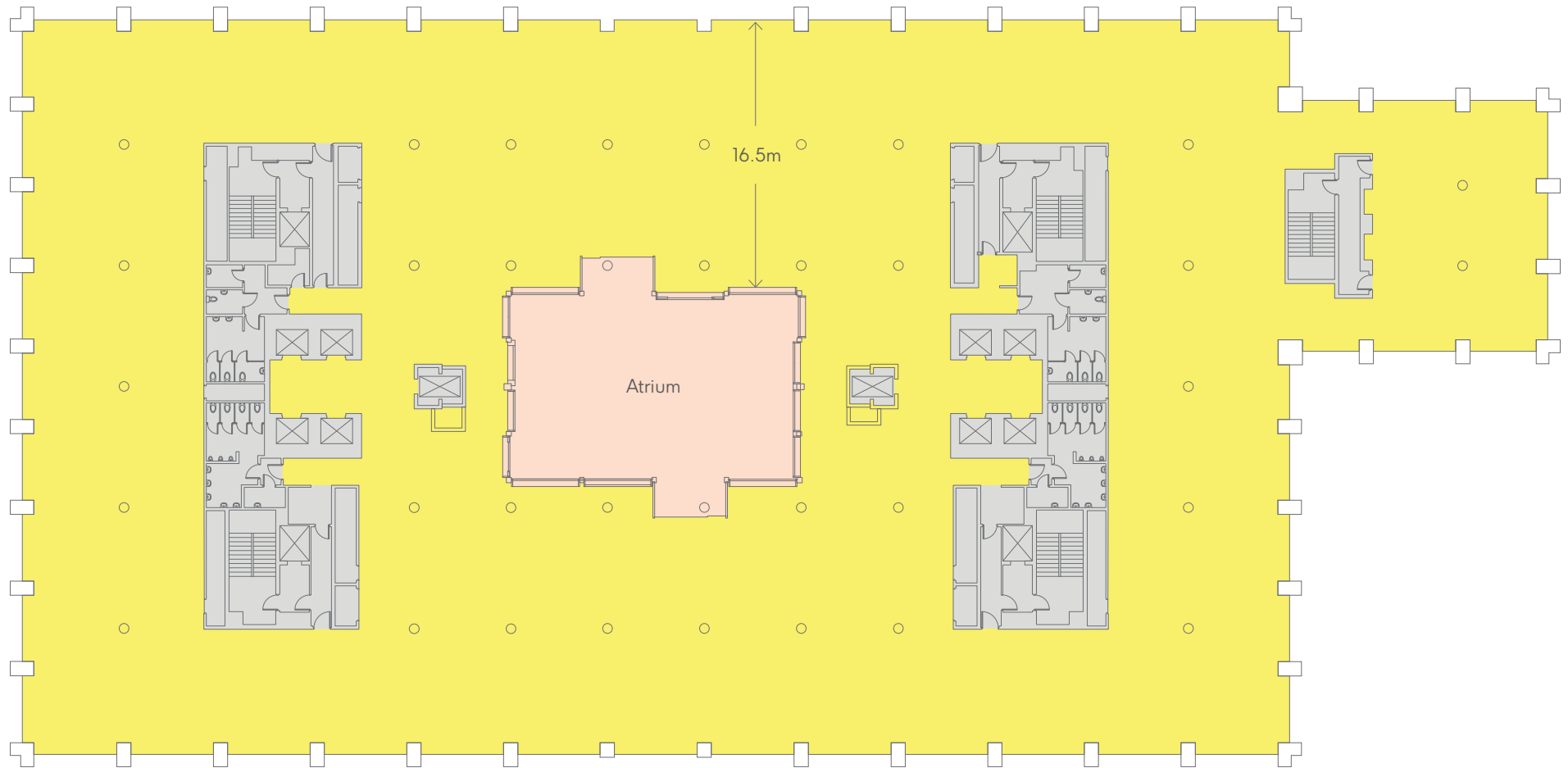
Let Office	Yellow
Available Retail	Dark Green
Under Offer Retail	Diagonal Stripes
Let Retail	Light Blue
Reception / Tenant Amenities	Orange
Risers	R
Core	Grey



4th

Office: 32,532 sq ft / 3,022 sq m

Additional smaller unit configurations also available on these floors.



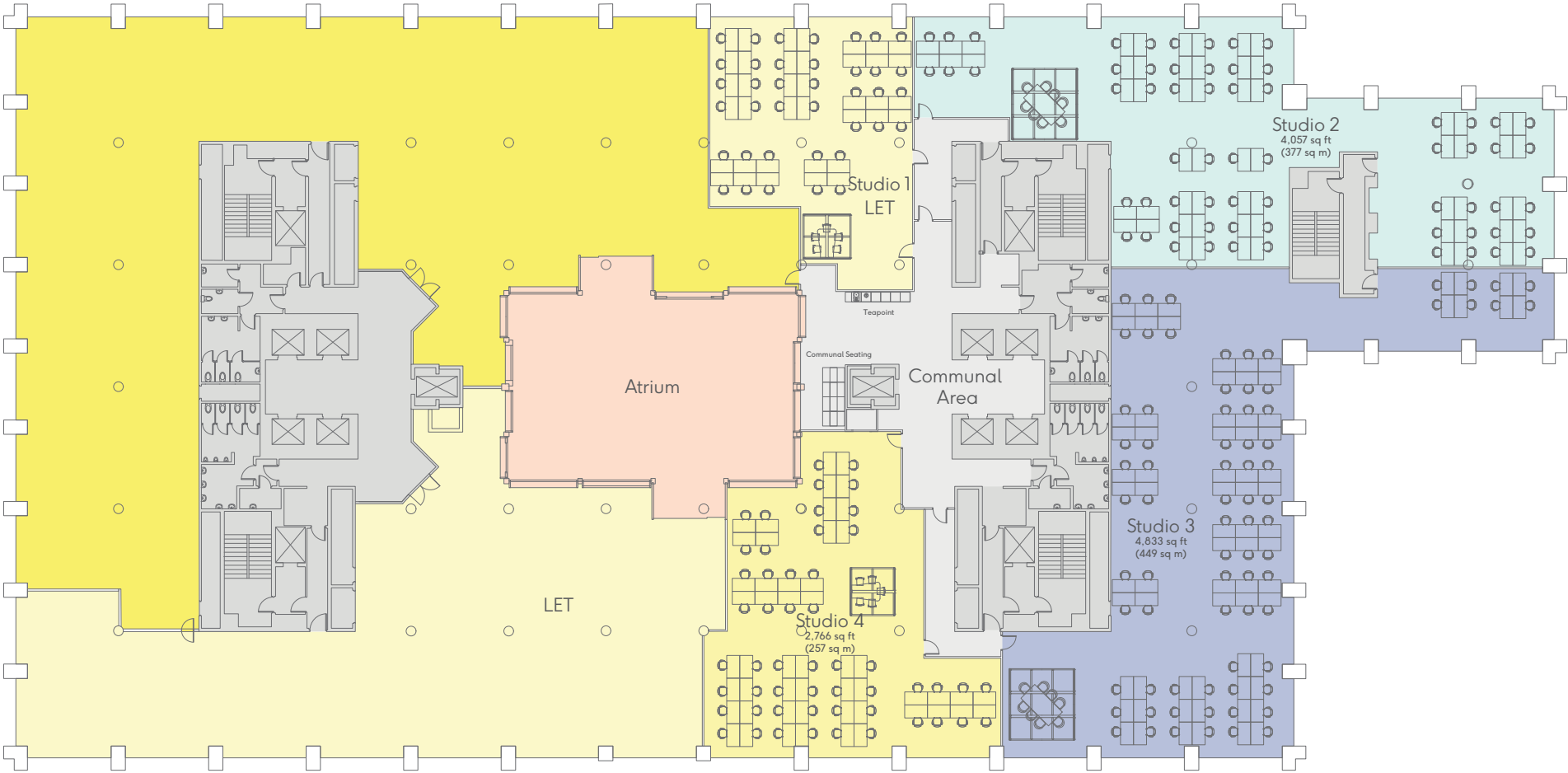
- Available Office ●
- Atrium ●
- Core ●



Part 5th

Office: 9,375 sq ft / 871 sq m

Studios: Studio 2: 4,057 sq ft / 377 sq m. Studio 3: 4,833 sq ft / 449 sq m. Studio 4: 2,766 sq ft / 257 sq m

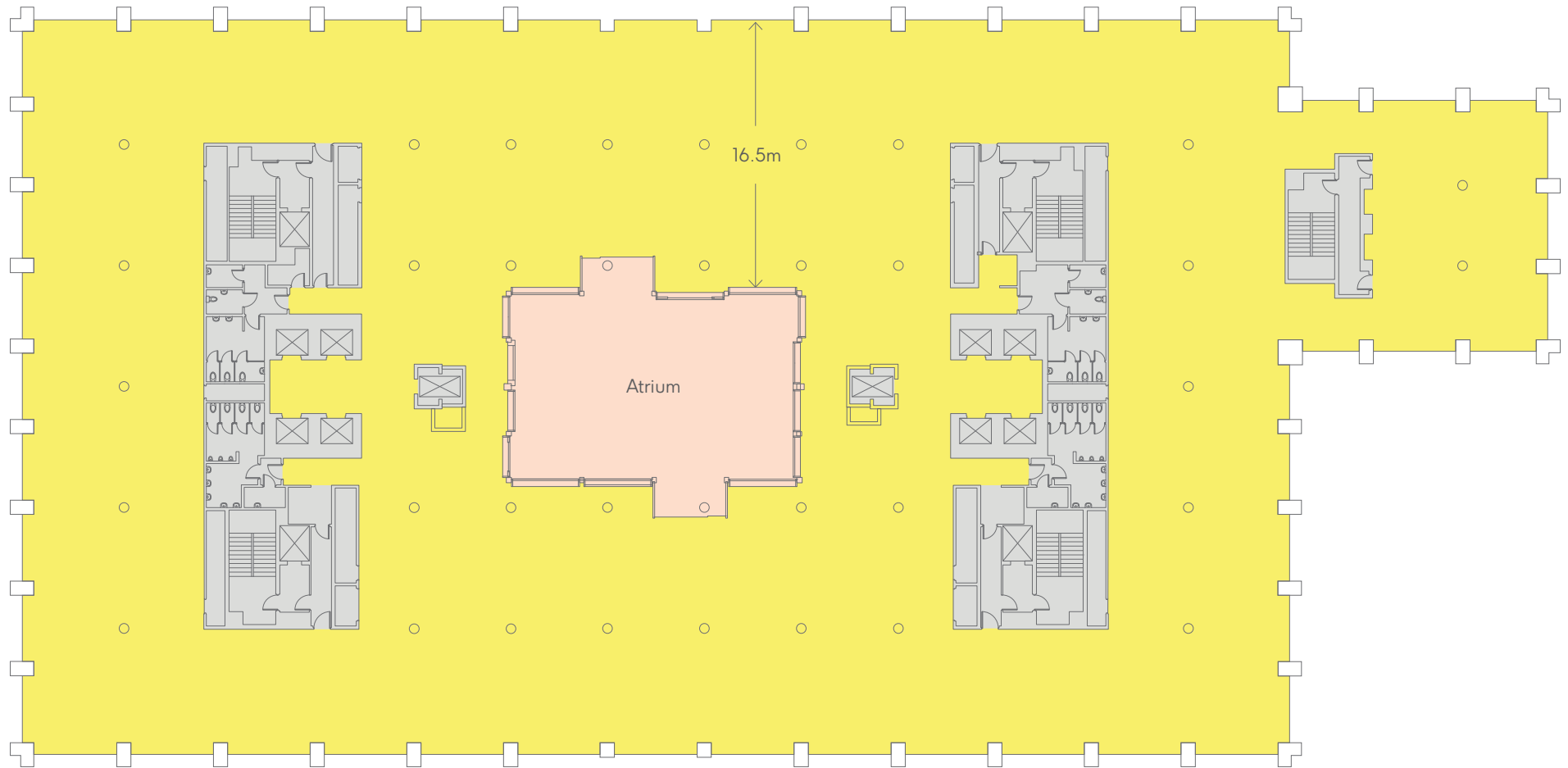


Available Office	●	Studio 2	●
Let Office	●	Studio 3	●
Atrium	●	Studio 4	●
Core	●		



6th

Office: 32,372 sq ft / 3,007 sq m

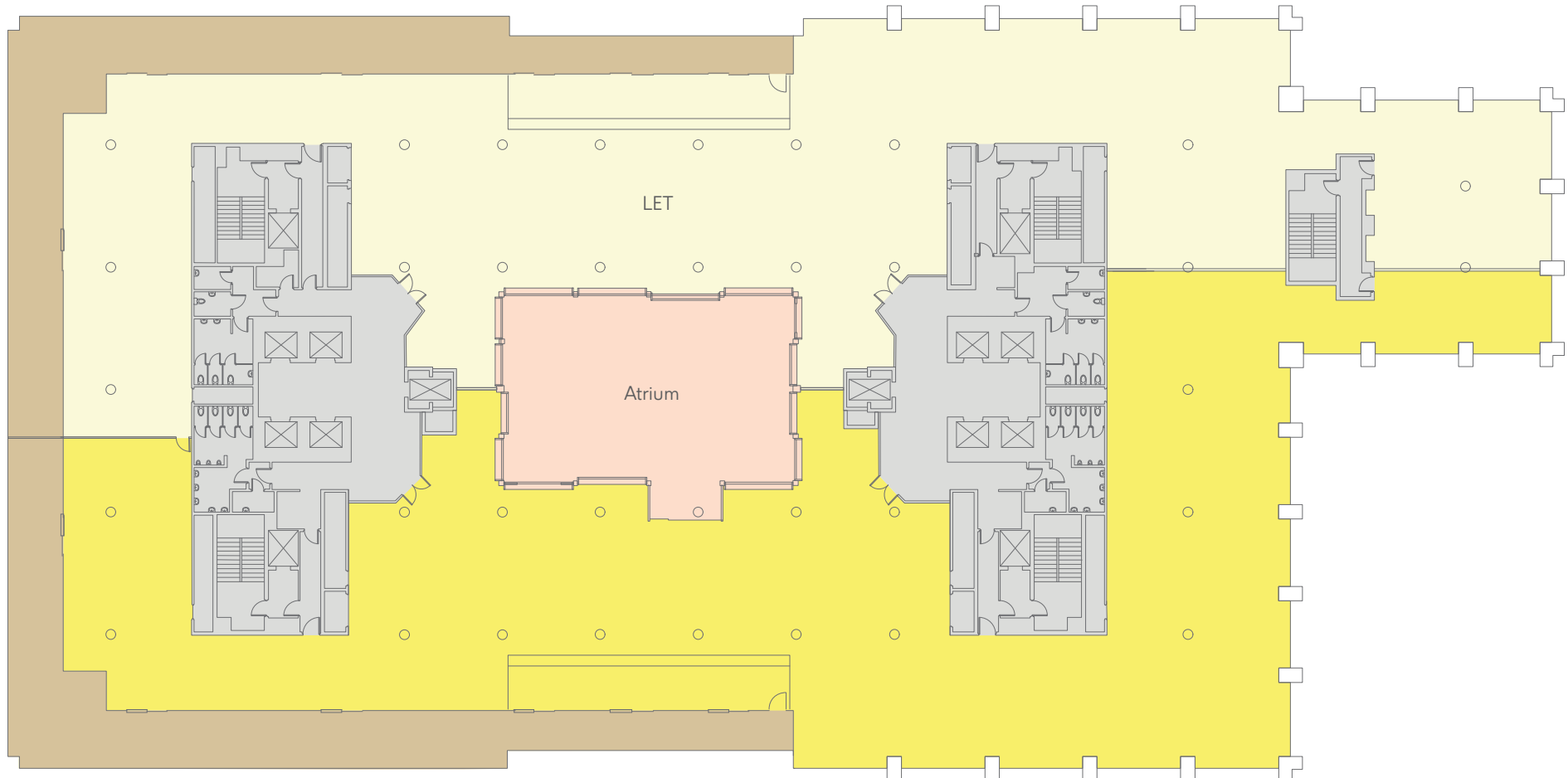


- Available Office ●
- Atrium ●
- Core ●



Part 7th (Terrace)

Office: 16,665 sq ft / 1,548 sq m

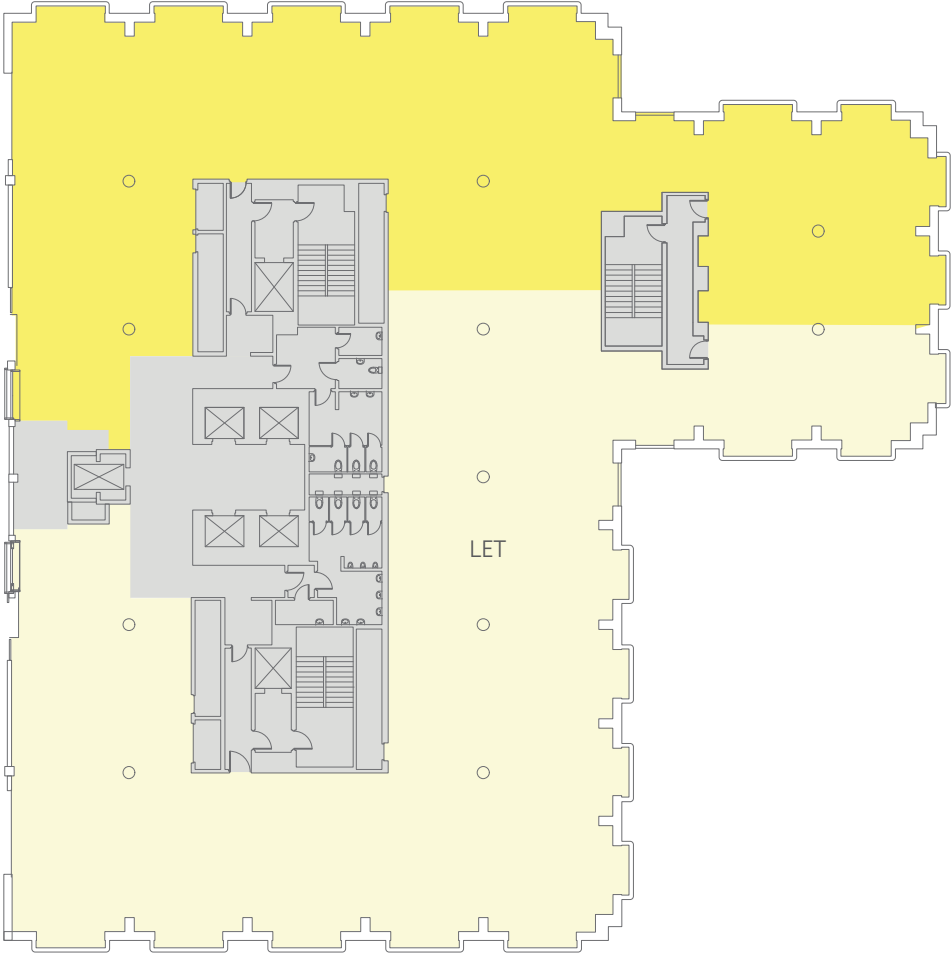


Available Office	●	Terrace	●
Let Office	●	Core	●
Atrium	●		



Part 8th

Office: 6,114 sq ft / 568 sq m

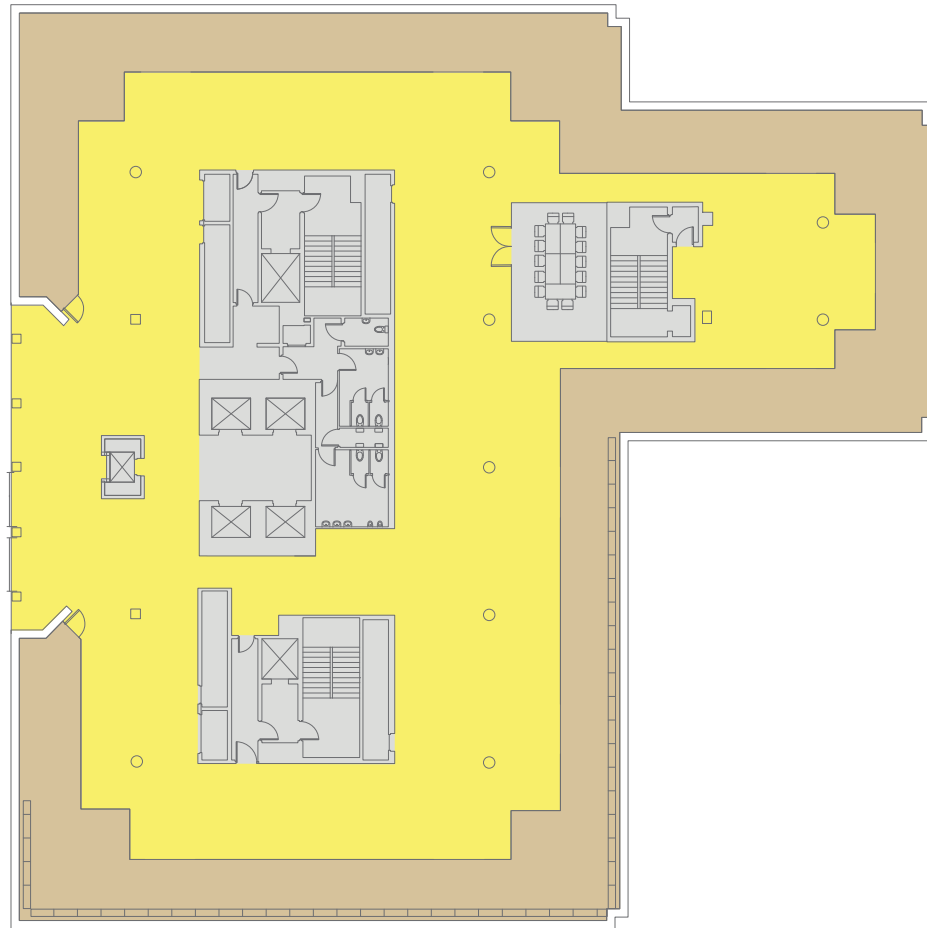


- Available Office ●
- Let Office ●
- Atrium ●
- Core ●



9th (Terrace)

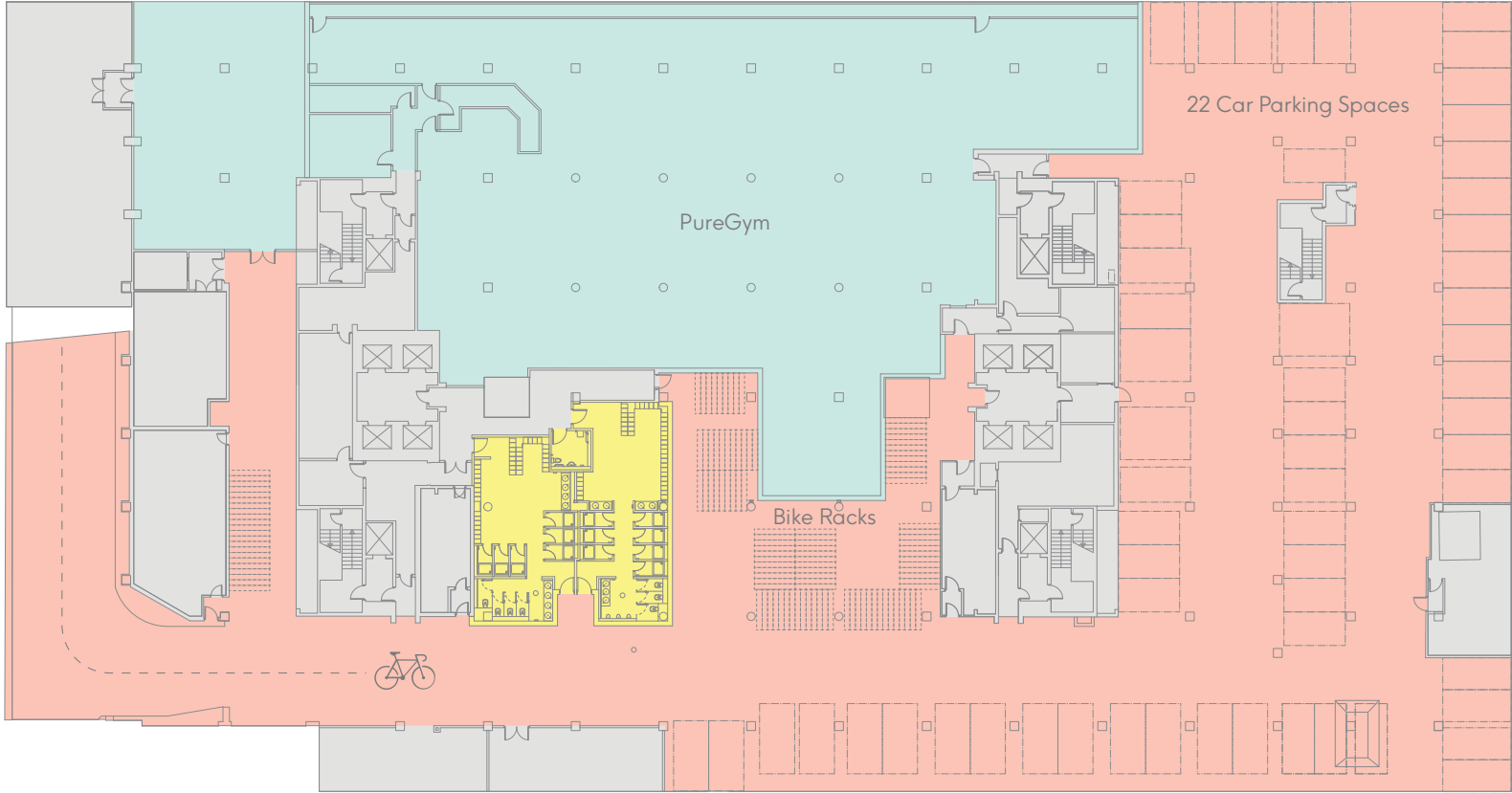
Office: 9,171 sq ft / 852 sq m



- Available Office ●
- Atrium ●
- Terrace ●
- Core ●



Basement



- Showers ●
- Let Retail ●
- Reception / Tenant Amenities ●
- Risers R
- Core ●



Contact Details

Office

CBRE

Simon Conie
DL +44 (0) 20 7182 3403
M +44 (0) 7702 974 333
simon.conie@cbre.com

Luke Hacking
DL +44 (0) 20 7182 2169
M +44 (0) 7951 224 060
luke.hacking@cbre.com

Hannah Grint
DL +44 (0) 20 3257 6341
M +44 (0) 7545 868 543
hannah.grint@cbre.com

Allsop LLP

James Neville
DL +44 (0) 20 7588 4433
M +44 (0) 7789 658 540
james.neville@allsop.co.uk

Nick Russell-Smith
DL +44 (0) 20 7588 4433
M +44 (0) 7827 022 832
nick.russell-smith@allsop.co.uk

Tom Nicoll
DL +44 (0) 20 7588 4433
M +44 (0) 7734 680 412
tom.nicoll@allsop.co.uk

Retail

CBRE

Charlie Reid
DL +44 (0) 20 7182 2473
M +44 (0) 7896 072 899
charlie.reid@cbre.com

Will Brown
DL +44 (0) 20 7182 2785
M +44 (0) 7870 637 267
will.brown@cbre.com

Eloise Ladkin
DL +44 (0) 20 3257 6107
M +44 (0) 7469 375 720
eloise.ladkin@cbre.com

CF Commercial

Craig Fisher
DL +44 (0) 20 3216 3911
M +44 (0) 7947 534 589
craig@cfcommercial.co.uk

Max Taylor-Smith
DL +44 (0) 20 3216 3912
M +44 (0) 7765 251 016
max@cfcommercial.co.uk

Fund Manager

LaSalle Investment Management

Developer

Trilogy

Architects

Studio RHE

Important Notice: 1. Particulars: The particulars are not an offer or contract, nor part of one. You should not rely on statements by Allsop or CBRE in the particulars or by word of mouth or in writing ("information") as being factually accurate about the property, its condition or its value. Neither CBRE or Allsop has any authority to make any representations about the property and accordingly any information given entirely without responsibility on the part of the agents, seller (s) or lessor (s). 2. Photos etc: The photographs show only certain parts of the property as they appeared at the time they were taken. Areas, measurements and distances given are approximate only. 3. Regulations etc: Any references to alterations to, or use of, any part of the property does not mean that any necessary planning, building regulations or other consent has been obtained. A buyer or lessee must find out by inspection or in other ways that these matters have been properly dealt with and that all information is correct. CGIs are for indicative purposes only and may be subject to change. Allsop is the trading name of Allsop LLP, a limited liability partnership registered in England and Wales with registered company number OC315531. CBRE is the trading name of CBRE Limited, a limited liability partnership registered in England and Wales with registered company number 3536032. August 2019.