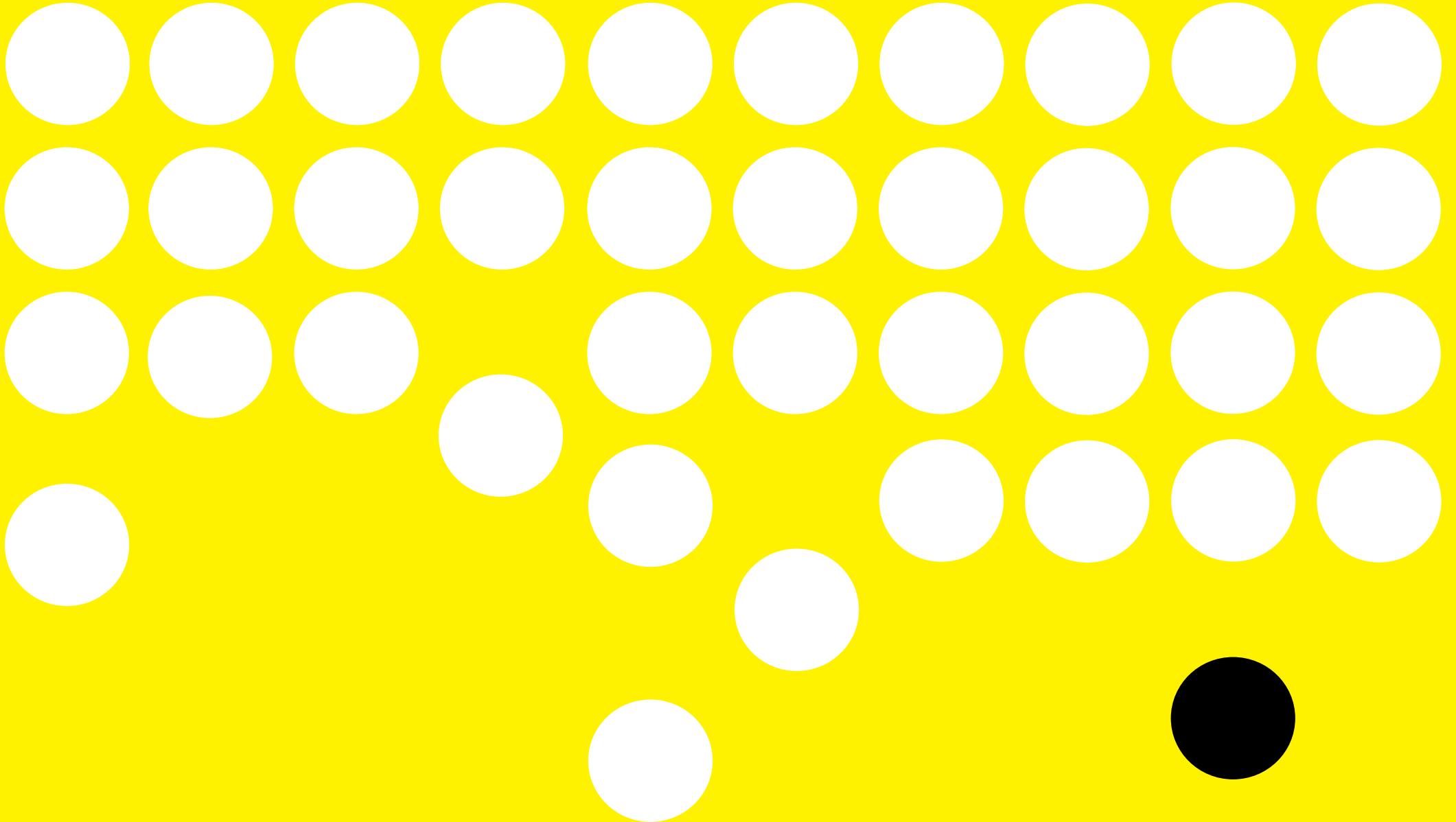


Republic

Export Building

Office Floor Plans



# Schedule of Areas

9th (Terrace)	Office	9,662 sq ft	898 sq m	
8th	Office	10,323 sq ft	959 sq m	
7th (Terrace)	Office 7.01	13,358 sq ft	1,241 sq m	
	Office 7.02	12,150 sq ft	1,129 sq m	
6th	Office 6.01	13,462 sq ft	1,251 sq m	
	Office 6.02	12,156 sq ft	1,129 sq m	
5th	Office 5.01	13,451 sq ft	1,250 sq m	
	Office 5.02	12,166 sq ft	1,130 sq m	
4th	Office	22,727 sq ft	2,111 sq m	
3rd	Office	22,758 sq ft	2,114 sq m	
2nd	Office		Under Offer	
1st	Office 1.01	2,828 sq ft	263 sq m	
	Office 1.02	2,043 sq ft	190 sq m	
	Office 1.03	3,229 sq ft	300 sq m	
	Office 1.04		Let	
	Office 1.05		Let	
	Office 1.06	11,832 sq ft	1,099 sq m	
Ground	Office G.06	2,217 sq ft	206 sq m	
	Retail	9,071 sq ft	749 sq m	
<b>Total Office</b>		<b>163,455 sq ft</b>	<b>15,186 sq m</b>	

Available Office	●
Under Offer Office	▨
Available Retail	●
Under Offer Retail	▨
Atrium	●
Reception / Tenant Amenities	●
Communal Area	●
Terrace	●
Core	●

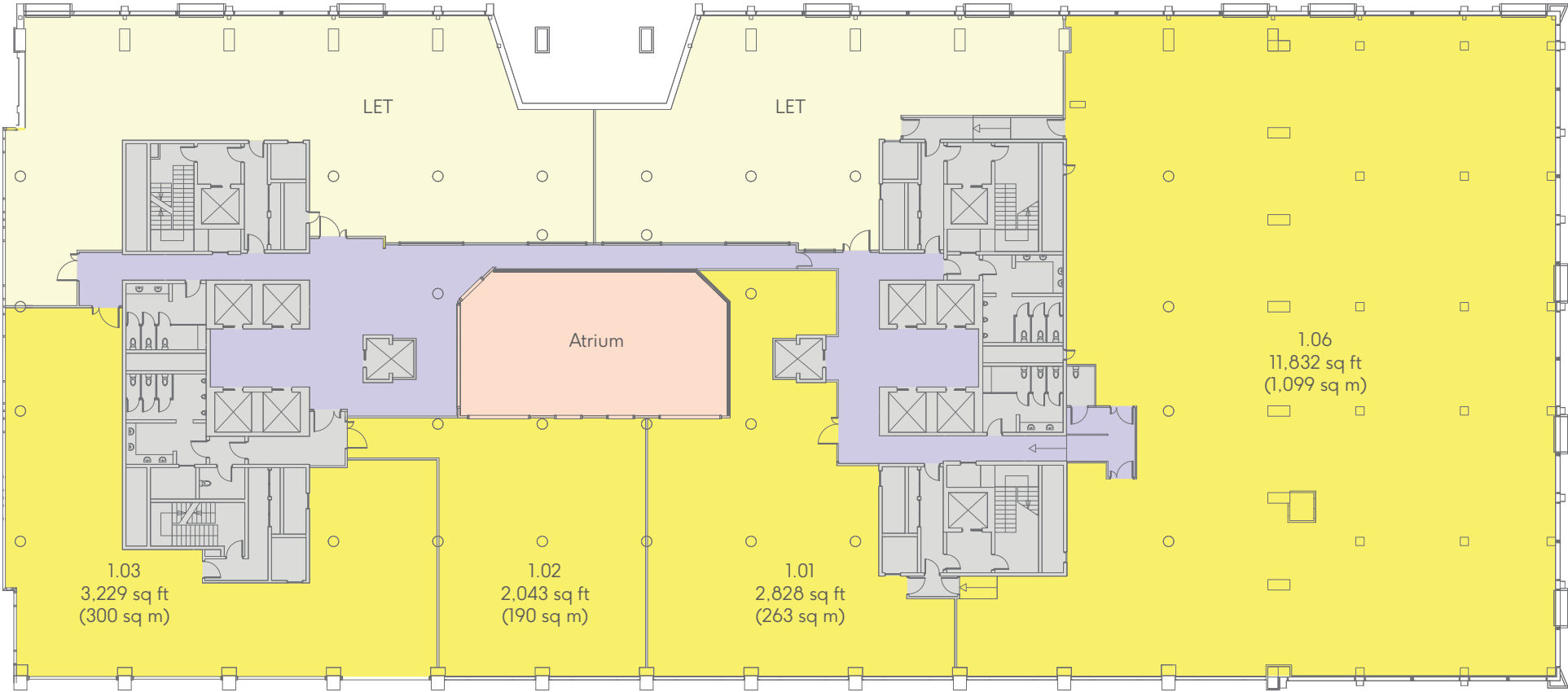
# Ground

Office: 2,217 sq ft / 206 sq m



1st

Office: 19,932 sq ft / 1,852 sq m

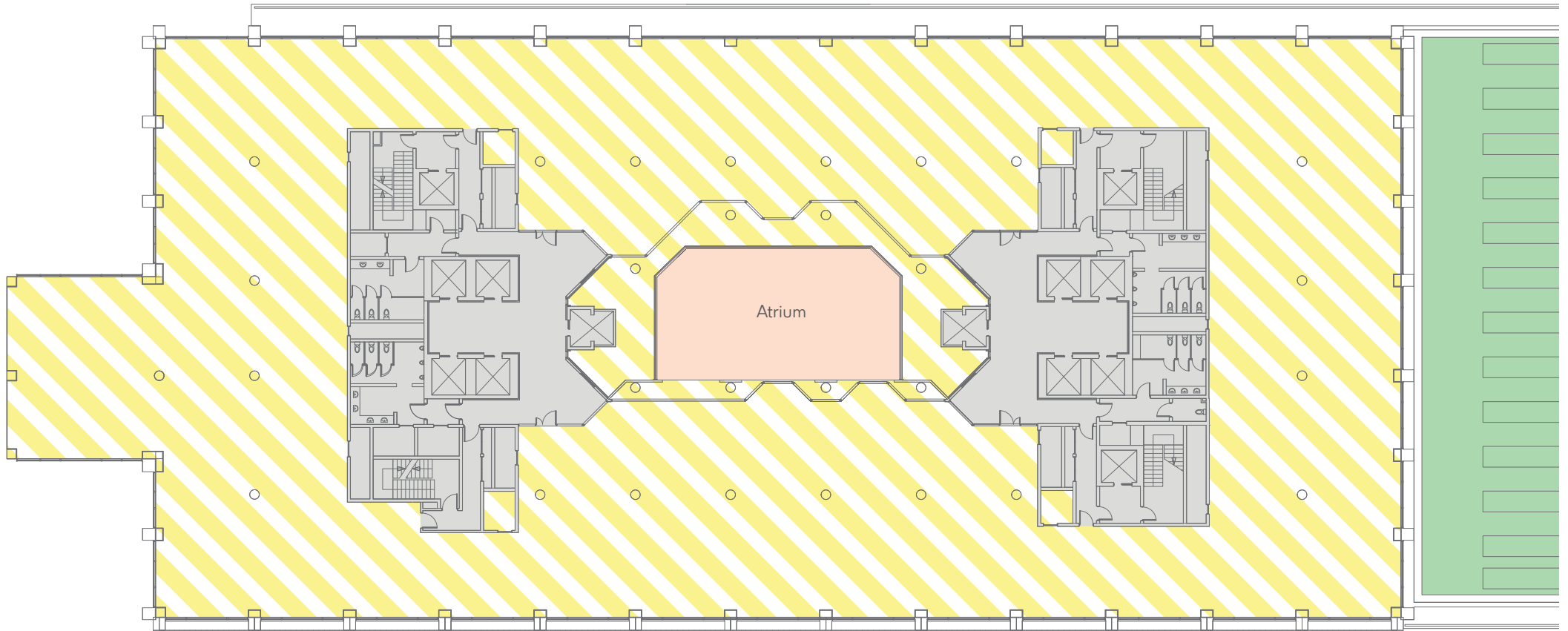


- Available Office ●
- Let Office ●
- Atrium ●
- Communal Area ●
- Core ●



# 2nd

Office: Under Offer

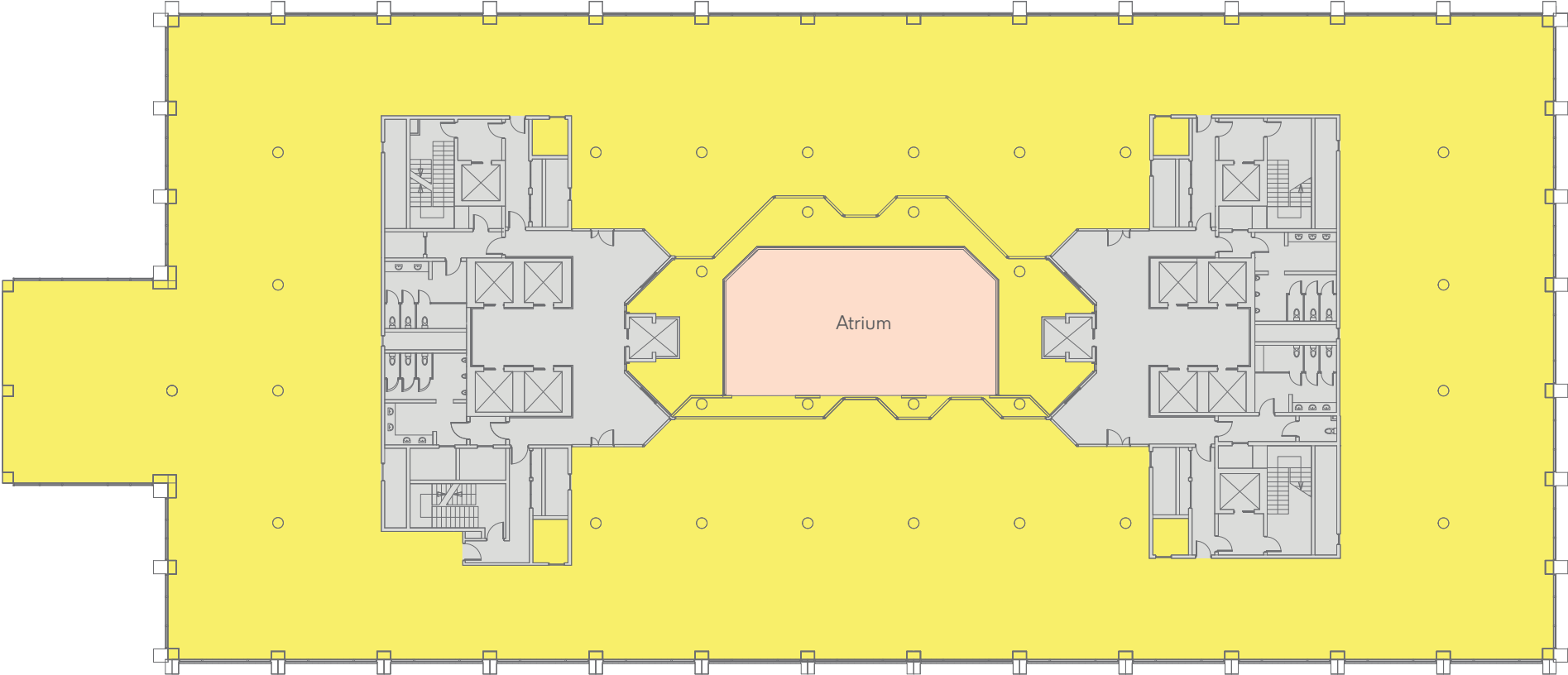


- Under Offer Office 
- Atrium 
- Green Roof 
- Core 



3rd

Office: 22,758 sq ft / 2,114 sq m

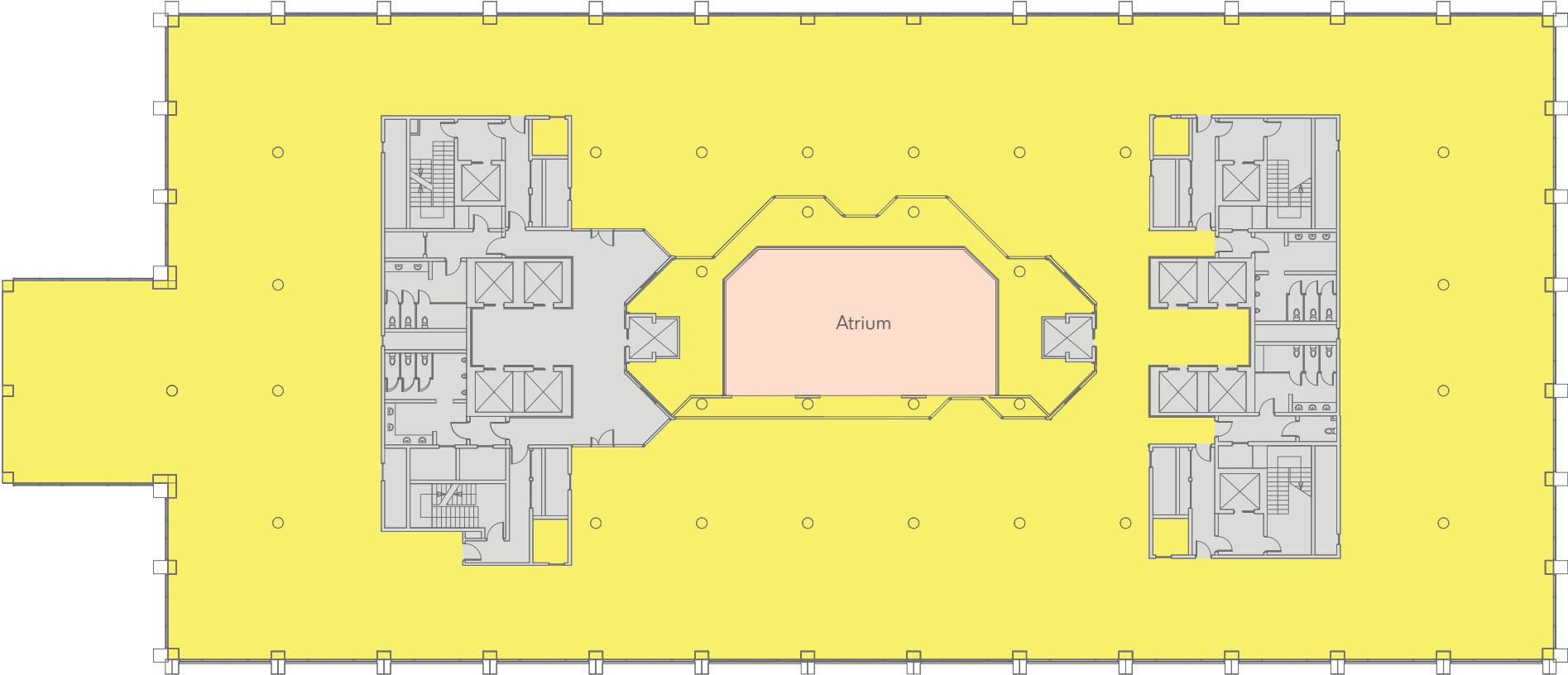


- Available Office ●
- Atrium ●
- Core ●



4th

Office: 22,727 sq ft / 2,111 sq m

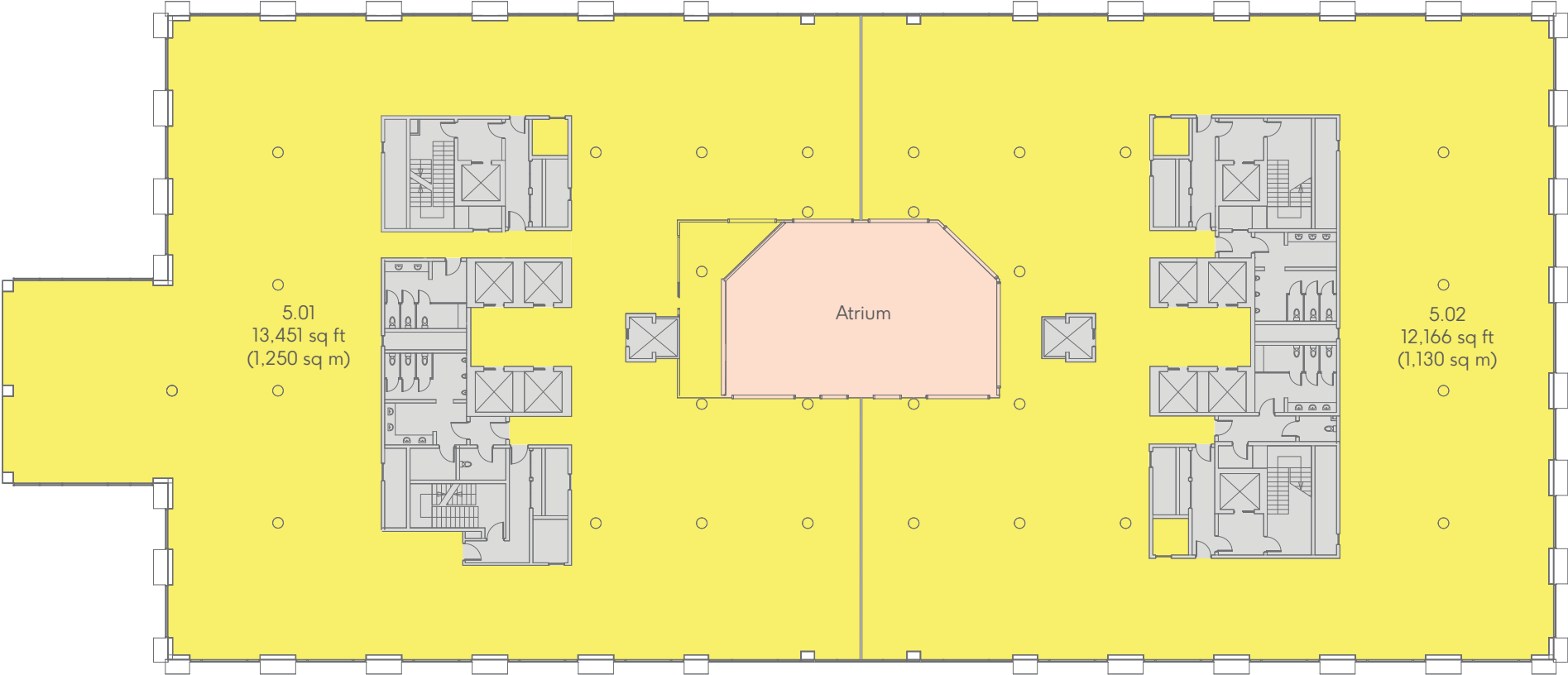


- Available Office ●
- Atrium ●
- Core ●



5th

Office: 25,617 sq ft / 2,380 sq m



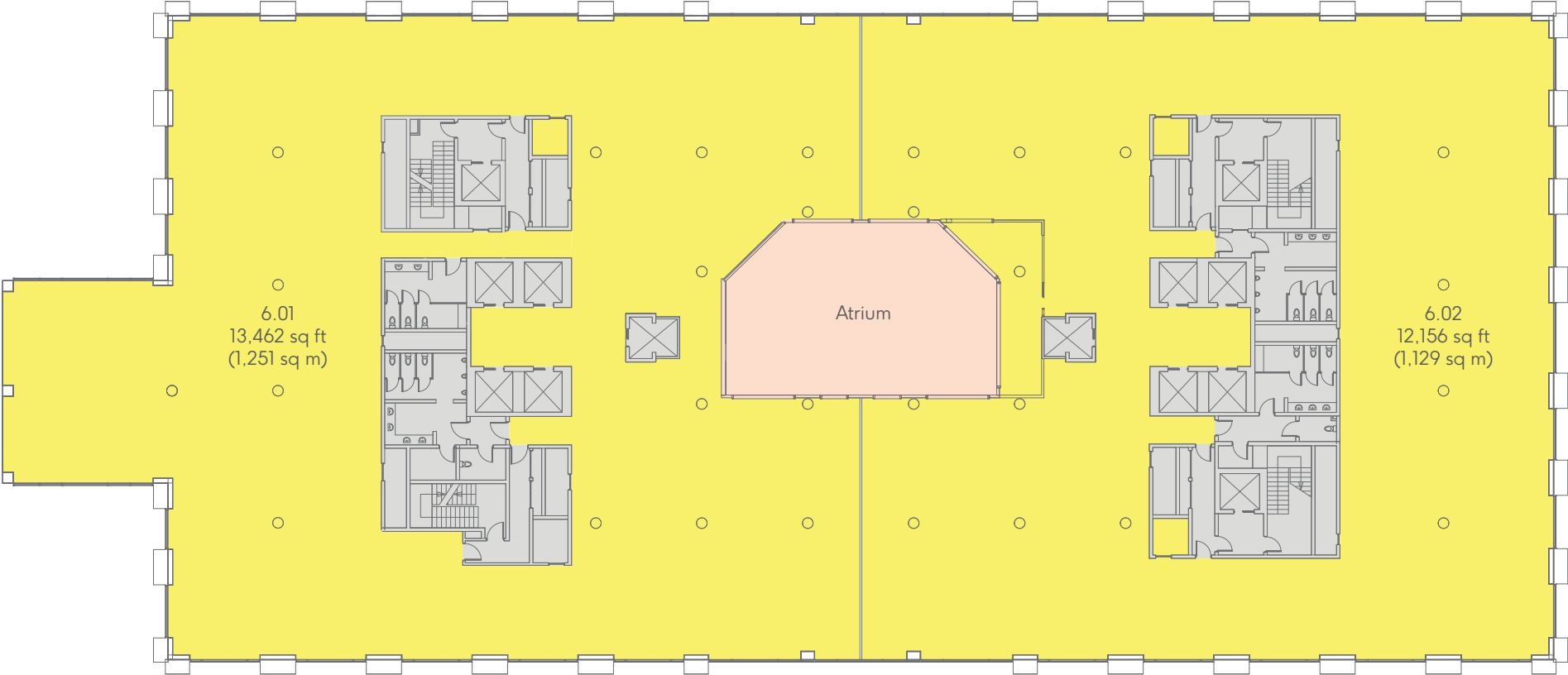
- Available Office ●
- Atrium ●
- Core ●





6th

Office: 25,508 sq ft / 2,380 sq m

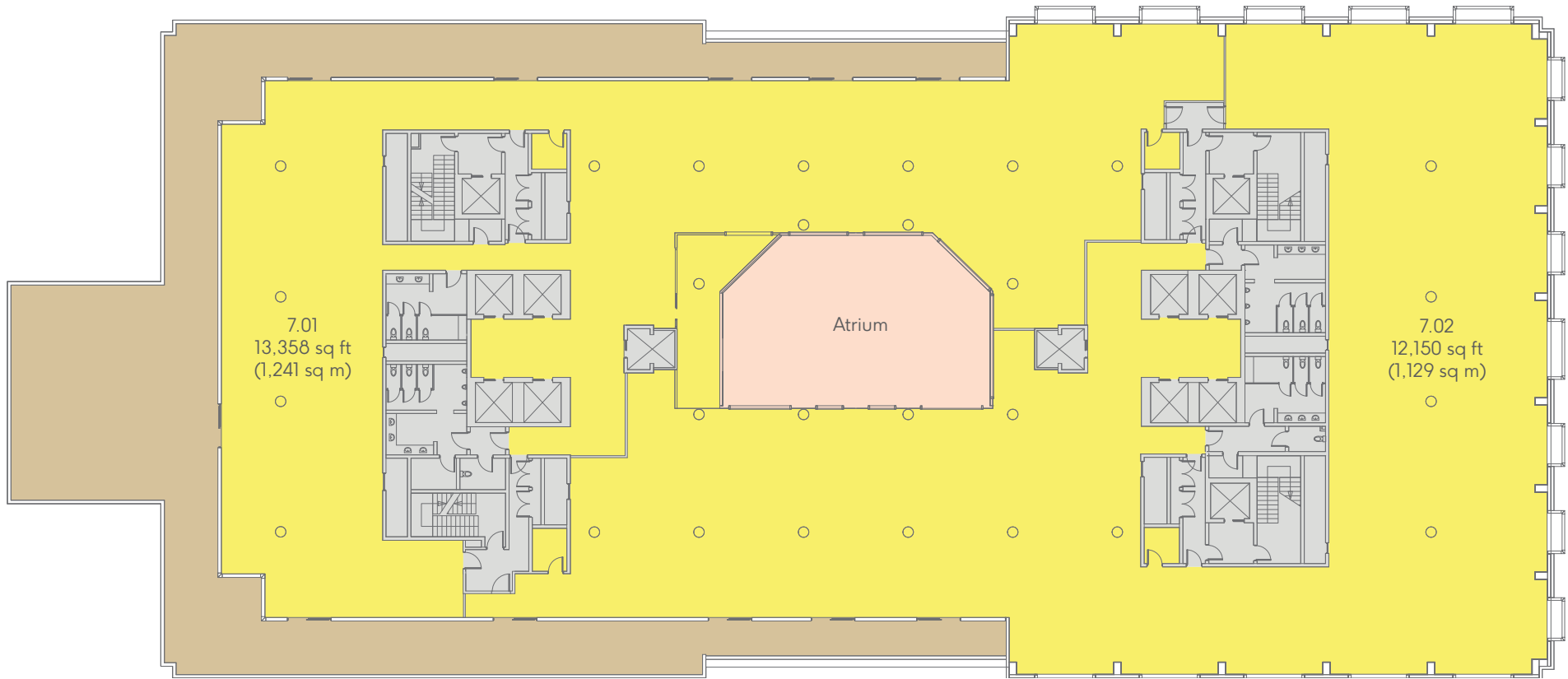


- Available Office ●
- Atrium ●
- Core ●



# 7th (Terrace)

Office: 25,508 sq ft / 2,370 sq m



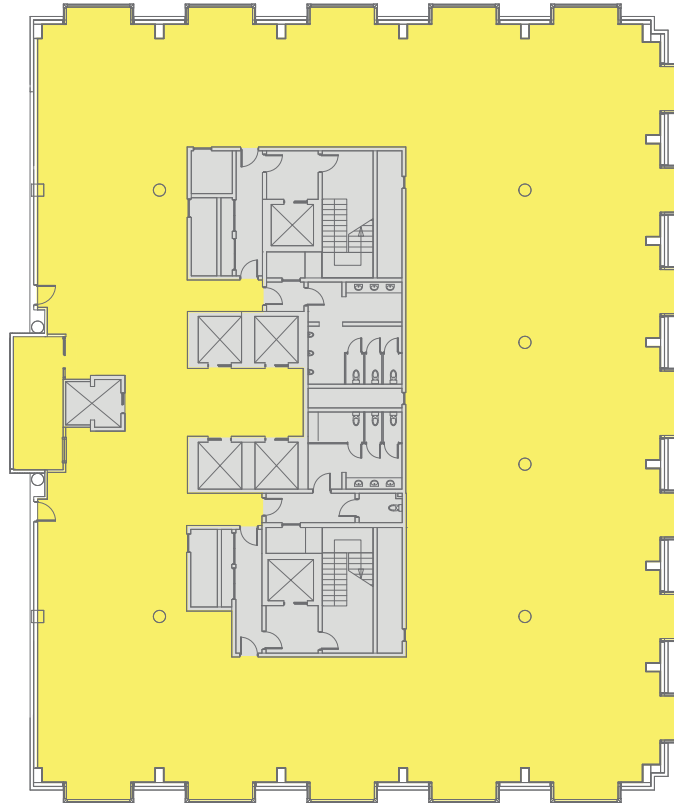
- Available Office ●
- Atrium ●
- Terrace ●
- Core ●



---

# 8th

Office: 10,323 sq ft / 959 sq m



---

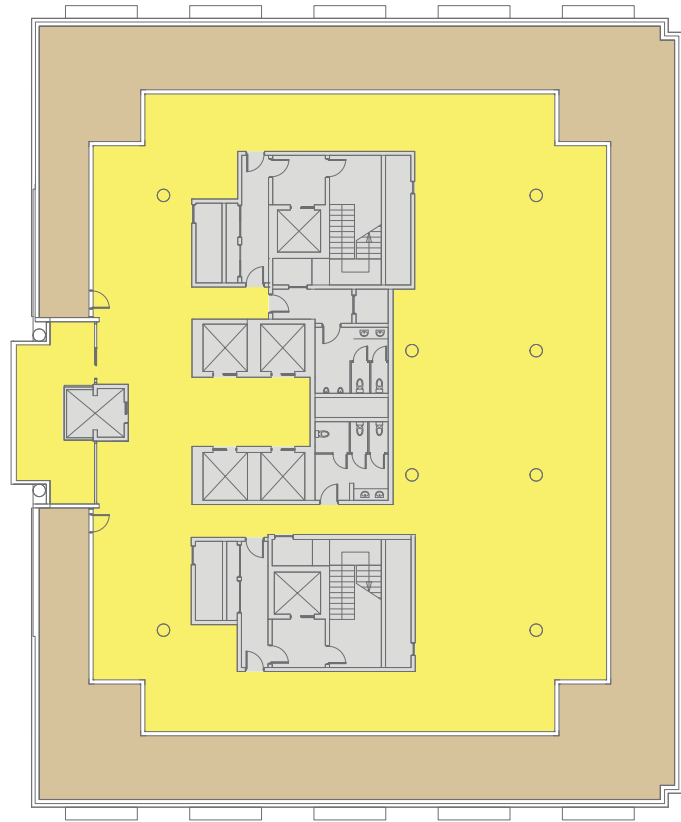
Available Office ●  
Core ●

---



# 9th (Terrace)

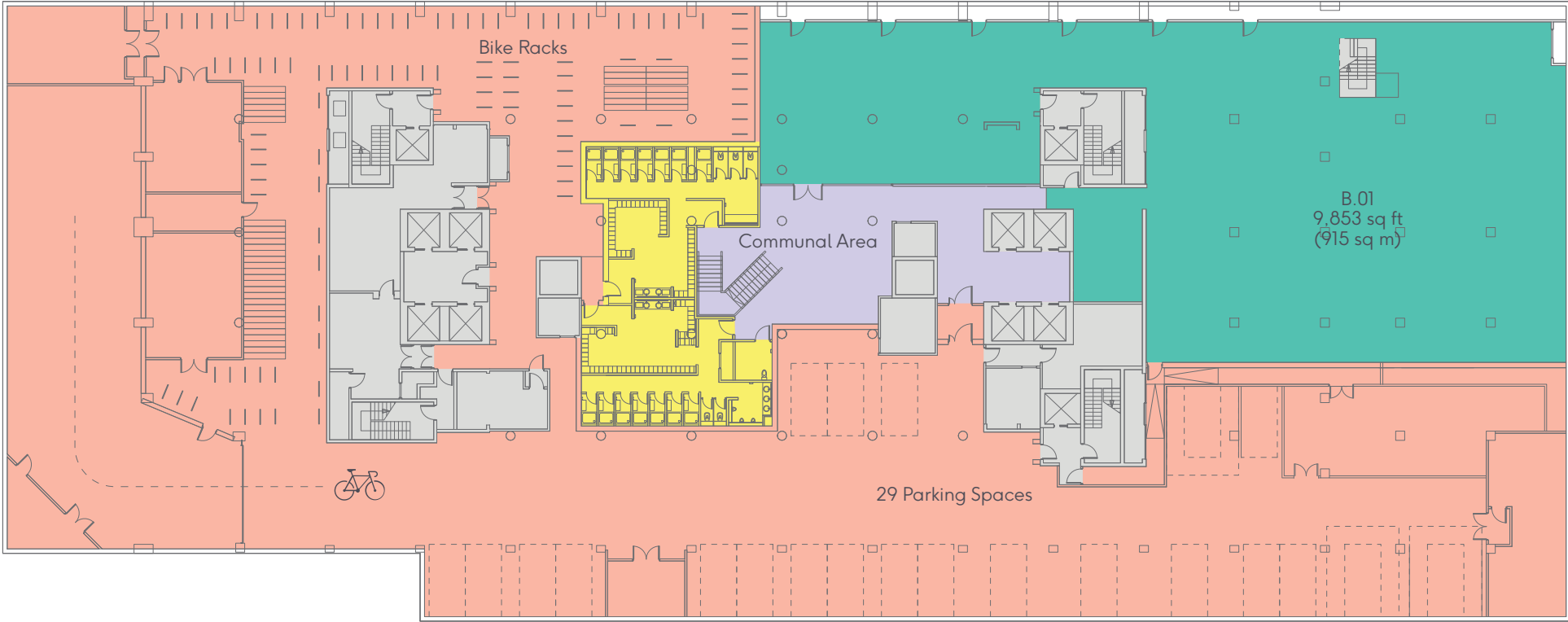
Office: 9,662 sq ft / 898 sq m



- Available Office ●
- Terrace ●
- Core ●



# Basement



- Available Retail ●
- Showers ●
- Reception / Tenant Amenities ●
- Communal Area ●
- Core ●



# Contact Details

## Office

---

### CBRE

Luke Hacking  
DL +44 (0) 20 7182 2169  
M +44 (0) 7951 224 060  
luke.hacking@cbre.com

—  
Hannah Grint  
DL +44 (0) 20 3257 6341  
M +44 (0) 7545 868 543  
hannah.grint@cbre.com

---

### Allsop LLP

James Neville  
DL +44 (0) 20 7588 4433  
M +44 (0) 7789 658 540  
james.neville@allsop.co.uk

—  
Nick Russell-Smith  
DL +44 (0) 20 7588 4433  
M +44 (0) 7827 022 832  
nick.russell-smith@allsop.co.uk

—  
Tom Nicoll  
DL +44 (0) 20 7588 4433  
M +44 (0) 7734 680 412  
tom.nicoll@allsop.co.uk

## Retail

---

### CBRE

Charlie Reid  
DL +44 (0) 20 7182 2473  
M +44 (0) 7896 072 899  
charlie.reid@cbre.com

—  
Eloise Ladkin  
DL +44 (0) 20 3257 6107  
M +44 (0) 7469 375 720  
eloise.ladkin@cbre.com

---

### CF Commercial

Craig Fisher  
DL +44 (0) 20 3216 3911  
M +44 (0) 7947 534 589  
craig@cfcommercial.co.uk

---

### Fund Manager

LaSalle Investment Management

---

### Developer

Trilogy

---

### Architects

Studio RHE

---

Important Notice: 1. Particulars: The particulars are not an offer or contract, nor part of one. You should not rely on statements by Allsop or CBRE in the particulars or by word of mouth or in writing ("information") as being factually accurate about the property, its condition or its value. Neither CBRE or Allsop has any authority to make any representations about the property and accordingly any information given in entirety without responsibility on the part of the agents, seller (s) or lessor (s). 2. Photos etc: The photographs show only certain parts of the property as they appeared at the time they were taken. Areas, measurements and distances given are approximate only. 3. Regulations etc: Any references to alterations to, or use of, any part of the property does not mean that any necessary planning, building regulations or other consent has been obtained. A buyer or lessee must find out by inspection or in other ways that these matters have been properly dealt with and that all information is correct. CGIs are for indicative purposes only and may be subject to change. Allsop is the trading name of Allsop LLP, a limited liability partnership registered in England and Wales with registered company number OC315531. CBRE is the trading name of CBRE Limited, a limited liability partnership registered in England and Wales with registered company number 3536032. April 2020.