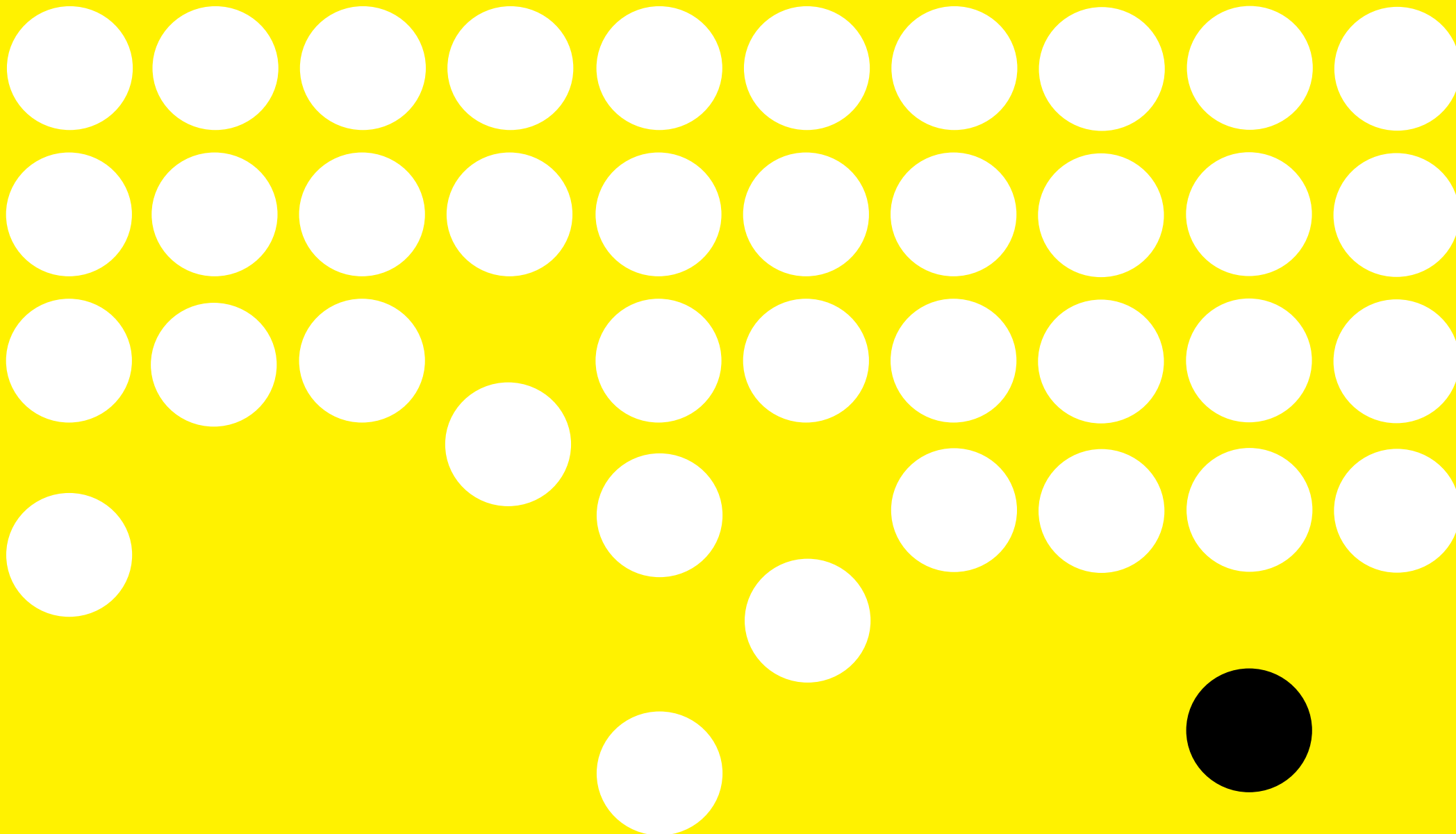


Republic

Export Building

Office Floor Plans



Schedule of Areas

9th (Terrace)	Office Terrace	5,445 sq ft 3,686 sq ft	506 sq m 342 sq m	
8th	Office	9,787 sq ft	909 sq m	
7th (Terrace)	Office 7.01 Terrace	8,215 sq ft 3,500 sq ft	763 sq m 325 sq m	
	Office 7.02 Terrace	11,030 sq ft 875 sq ft	1,025 sq m 81 sq m	
	Office 6.01 Office 6.02	12,593 sq ft 11,407 sq ft	1,170 sq m 1,060 sq m	
6th	Office 5.01 Office 5.02	12,585 sq ft 11,415 sq ft	1,169 sq m 1,060 sq m	
5th	Office	21,978 sq ft	2,042 sq m	
4th	Office	21,984 sq ft	2,042 sq m	
3rd	Office		Let	
2nd	Office		Let	
1st	Office 1.01	2,739 sq ft	254 sq m	
	Office 1.02	1,996 sq ft	185 sq m	
	Office 1.03	3,125 sq ft	290 sq m	
	Office 1.04		Let	
	Office 1.05		Let	
	Office 1.06	11,425 sq ft	1,061 sq m	
Ground	Office G.06	2,137 sq ft	199 sq m	
	Retail	9,071 sq ft	749 sq m	
Total Office		147,861 sq ft	13,735 sq m	

Available Office	
Under Offer Office	
Available Retail	
Under Offer Retail	
Atrium	
Reception / Tenant Amenities	
Communal Area	
Terrace	
Core	

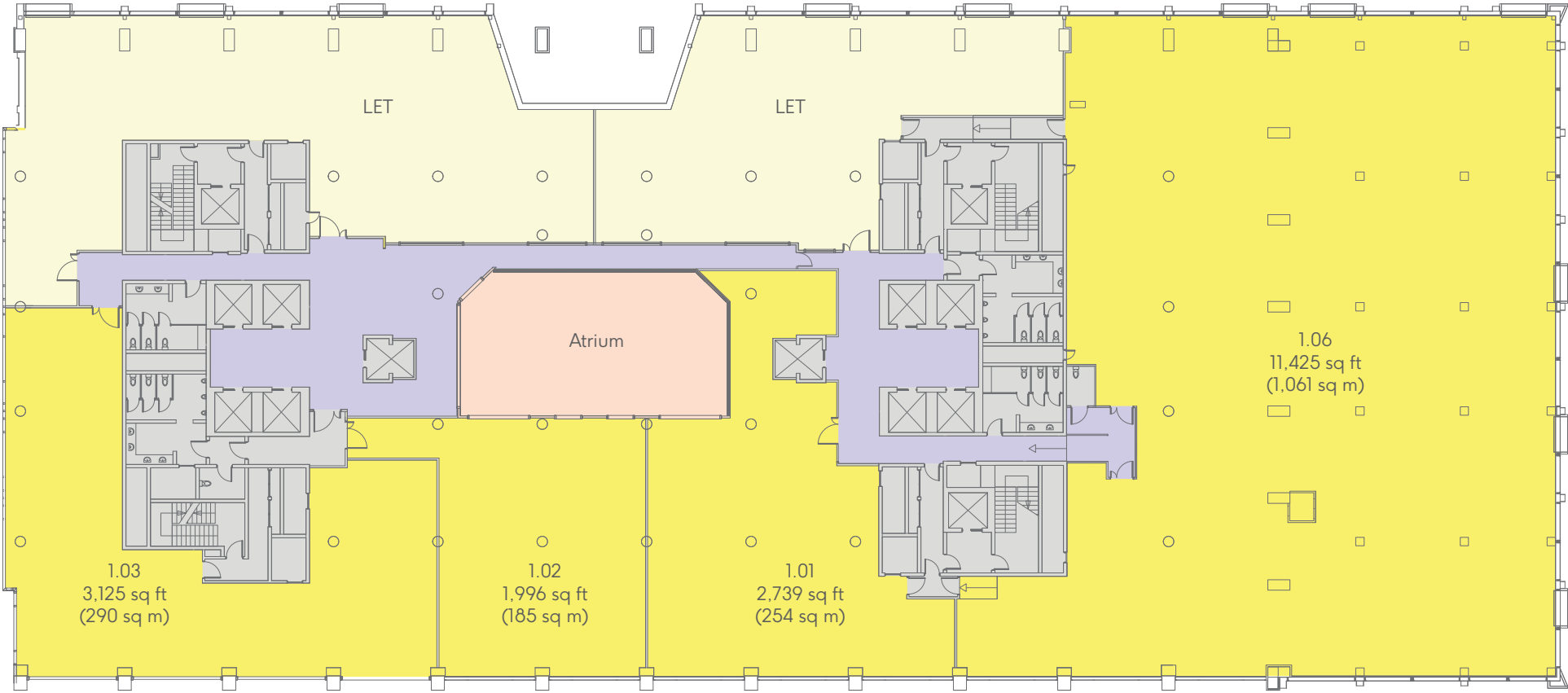
Ground

Office: 2,137 sq ft / 199 sq m



1st

Office: 19,285 sq ft / 1,790 sq m

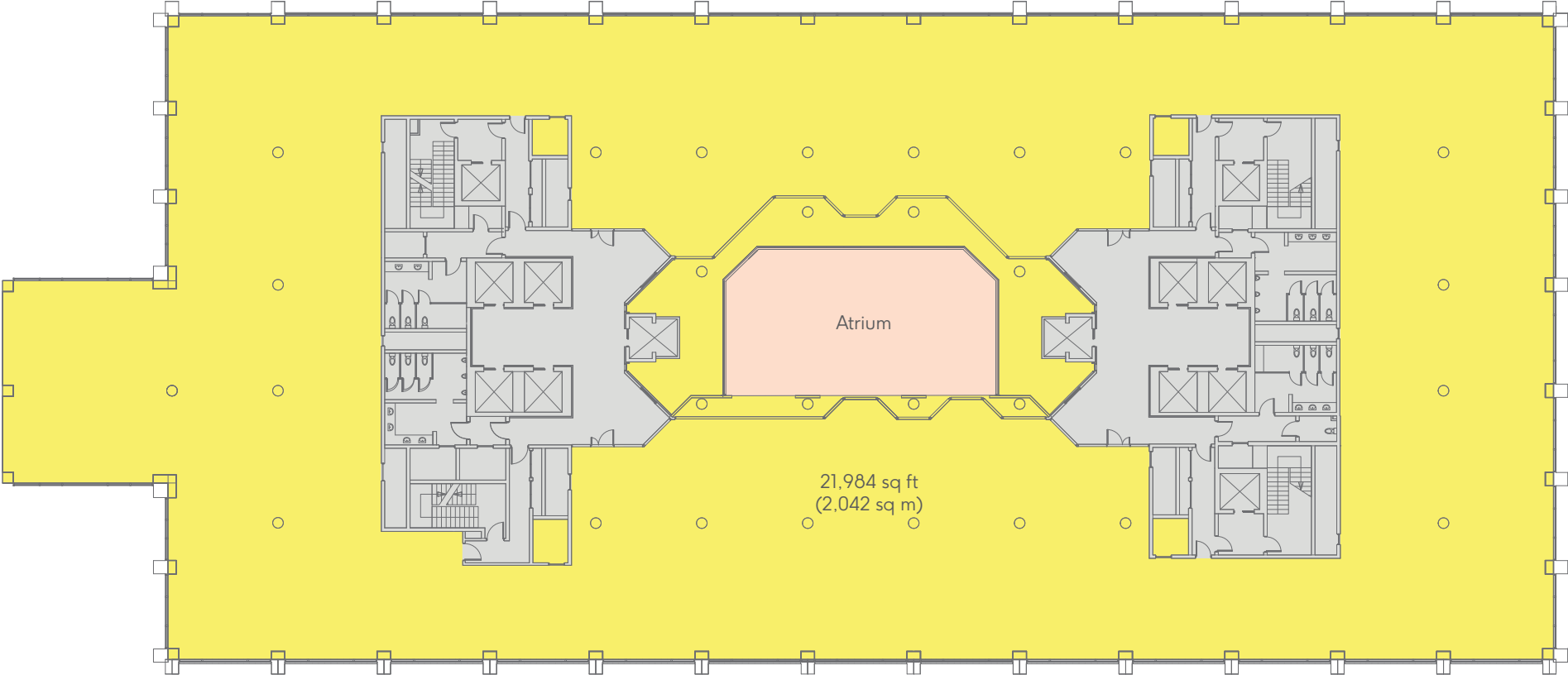


- Available Office ●
- Let Office ●
- Atrium ●
- Communal Area ●
- Core ●



3rd

Office: 21,984 sq ft / 2,042 sq m

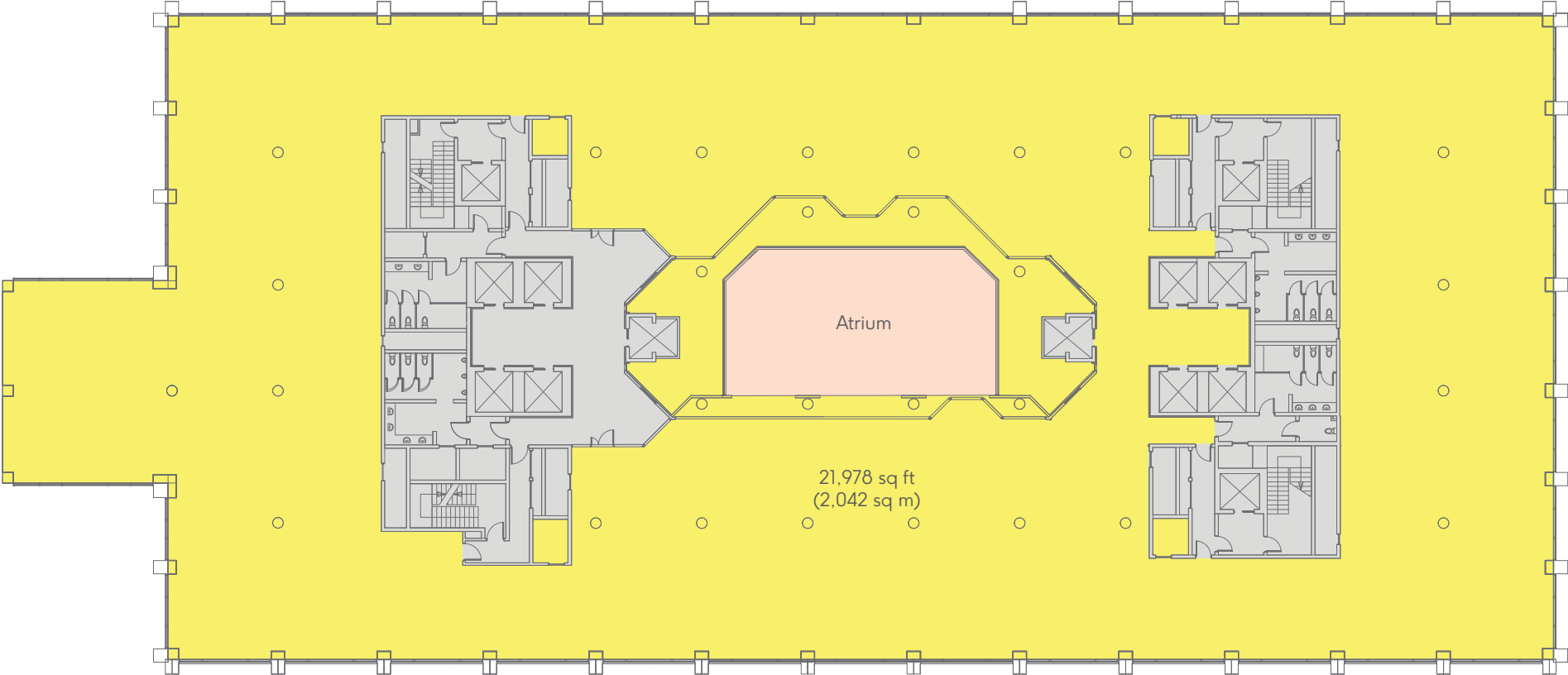


- Available Office ●
- Atrium ●
- Core ●



4th

Office: 21,978 sq ft / 2,042 sq m

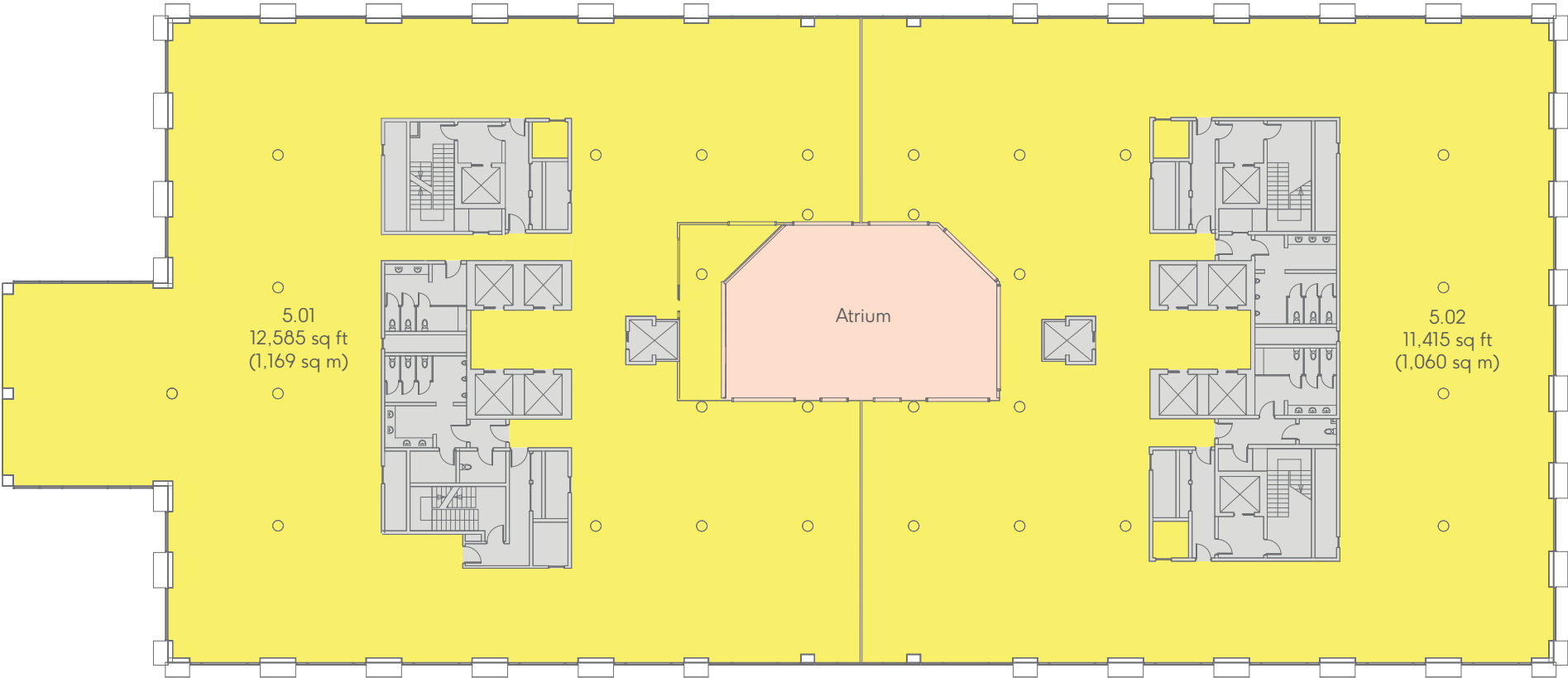


- Available Office ●
- Atrium ●
- Core ●



5th

Office: 24,000 sq ft / 2,230 sq m

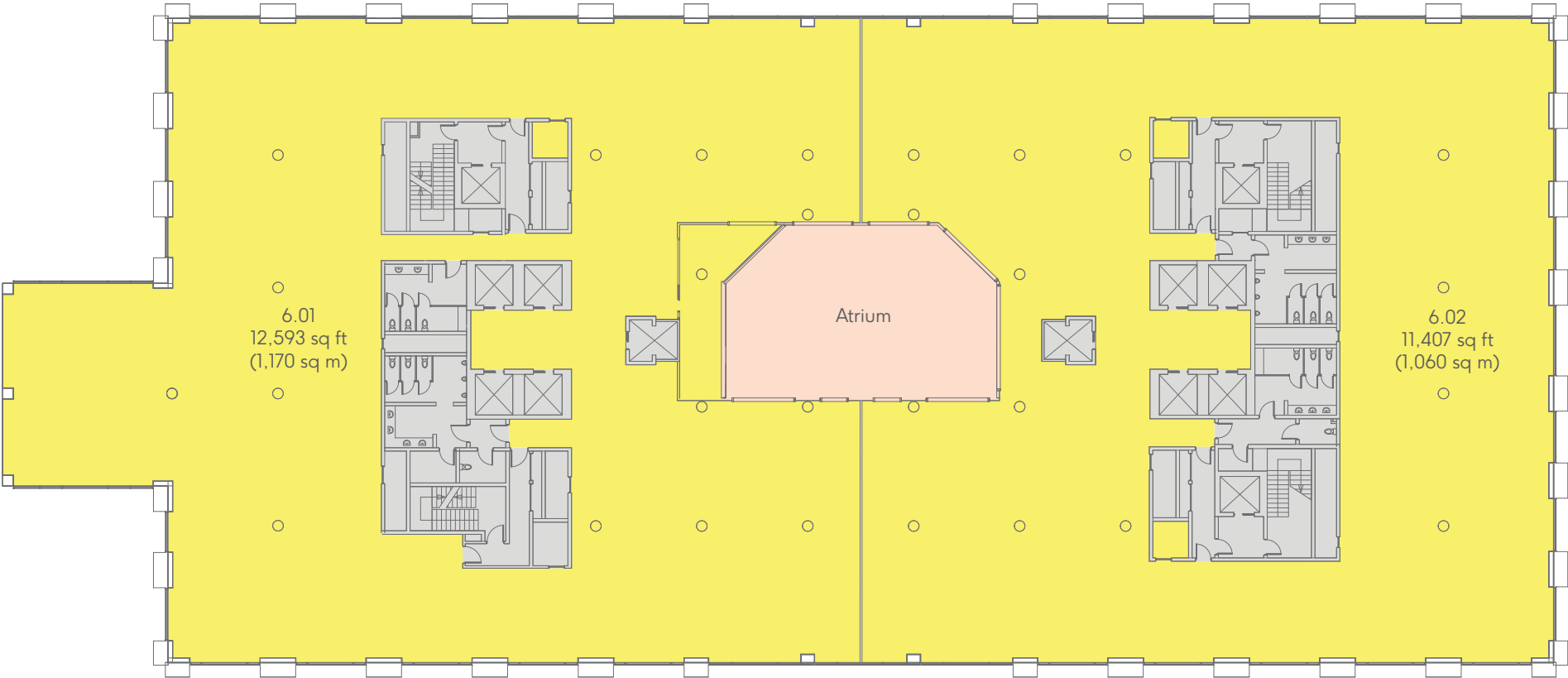


- Available Office ●
- Atrium ●
- Core ●



6th

Office: 24,000 sq ft / 2,230 sq m

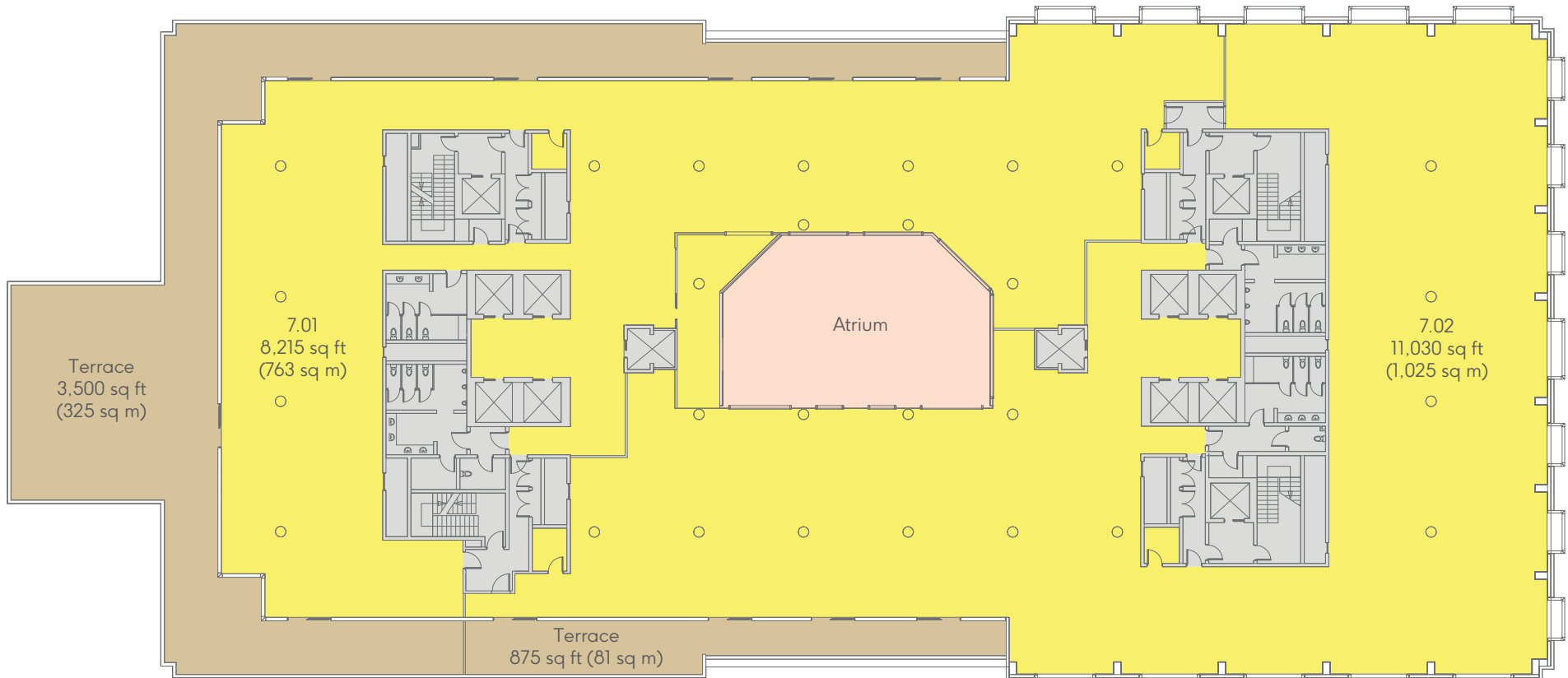


- Available Office ●
- Atrium ●
- Core ●



7th (Terrace)

Office: 23,620 sq ft / 2,194 sq m

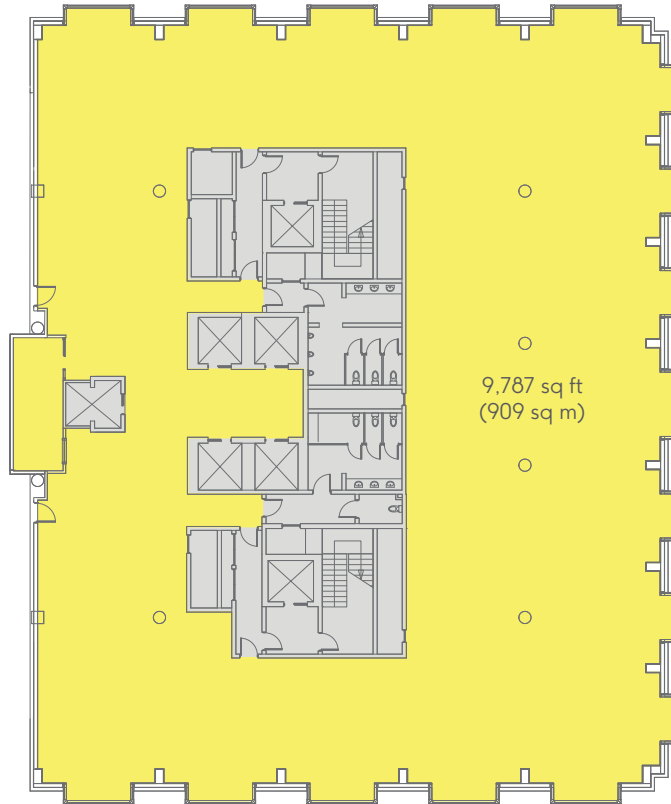


- Available Office ●
- Atrium ●
- Terrace ●
- Core ●



8th

Office: 9,787 sq ft / 909 sq m

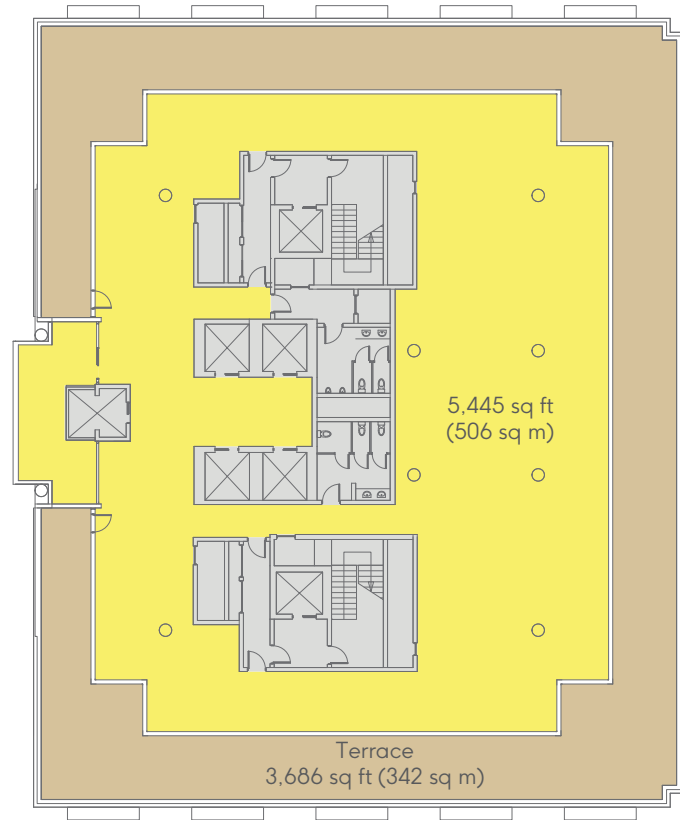


- Available Office ●
- Core ●



9th (Terrace)

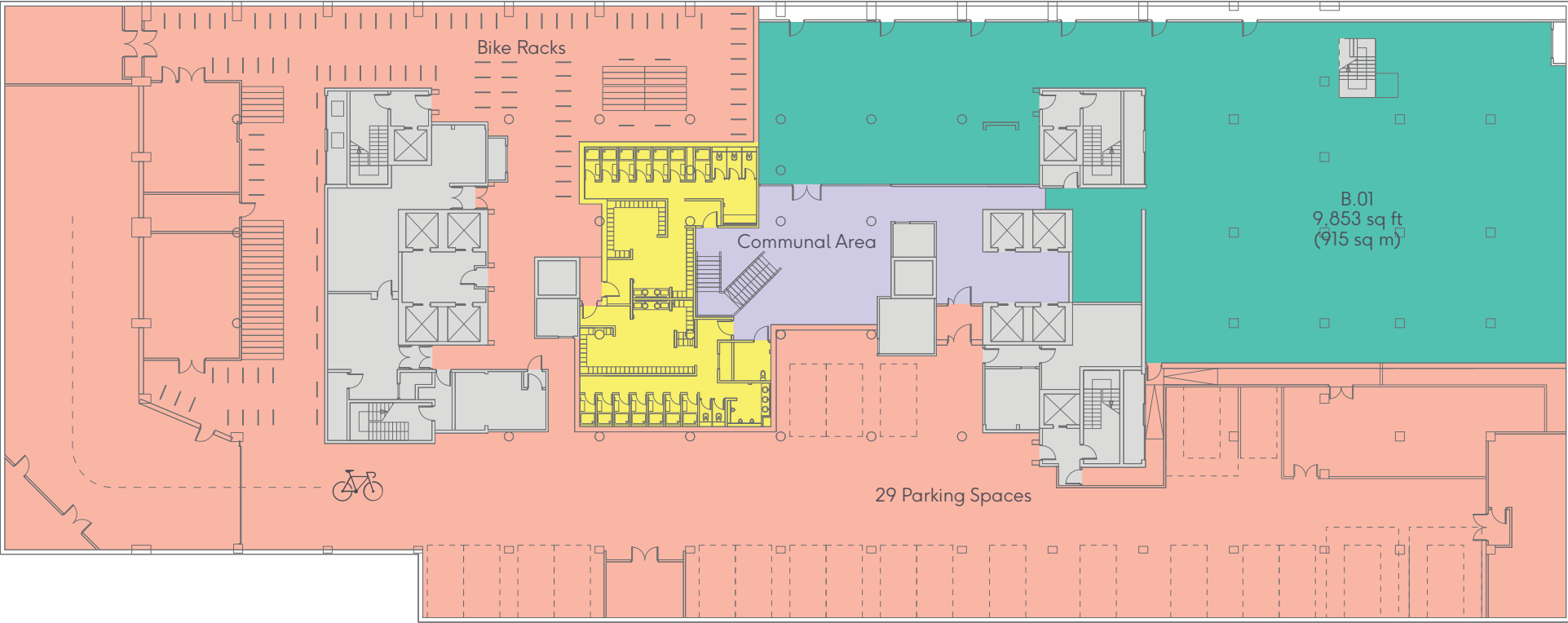
Office: 9,131 sq ft / 848 sq m



Available Office	●
Terrace	●
Core	●



Basement



- Available Retail ●
- Showers ●
- Reception / Tenant Amenities ●
- Communal Area ●
- Core ●



Contact Details

Office

CBRE

Luke Hacking
DL +44 (0) 20 7182 2169
M +44 (0) 7951 224 060
luke.hacking@cbre.com

—
Hannah Grint
DL +44 (0) 20 3257 6341
M +44 (0) 7545 868 543
hannah.grint@cbre.com

Allsop LLP

James Neville
DL +44 (0) 20 7588 4433
M +44 (0) 7789 658 540
james.neville@allsop.co.uk

—
Tom Nicoll
DL +44 (0) 20 7588 4433
M +44 (0) 7734 680 412
tom.nicoll@allsop.co.uk

Retail

CBRE

Steven Stedman
DL +44 (0) 20 7182 2712
M +44 (0) 7967 697 920
steven.stedman@cbre.com

—
Eloise Ladkin
DL +44 (0) 20 3257 6107
M +44 (0) 7469 375 720
eloise.ladkin@cbre.com

CF Commercial

Ben Reeve
DL +44 (0) 20 3216 3914
M +44 (0) 7808 904 683
ben@cfcommercial.co.uk

—
Jake Stace
DL +44 (0) 20 3216 3912
M +44 (0) 7597 685 889
jake@cfcommercial.co.uk

Fund Manager

LaSalle Investment Management

Developer

Trilogy

Architects

Studio RHE

Important Notice: 1. Particulars: The particulars are not an offer or contract, nor part of one. You should not rely on statements by Allsop or CBRE in the particulars or by word of mouth or in writing ("information") as being factually accurate about the property, its condition or its value. Neither CBRE or Allsop has any authority to make any representations about the property and accordingly any information given in entirety without responsibility on the part of the agents, seller (s) or lessor (s). 2. Photos etc: The photographs show only certain parts of the property as they appeared at the time they were taken. Areas, measurements and distances given are approximate only. 3. Regulations etc: Any references to alterations to, or use of, any part of the property does not mean that any necessary planning, building regulations or other consent has been obtained. A buyer or lessee must find out by inspection or in other ways that these matters have been properly dealt with and that all information is correct. CGIs are for indicative purposes only and may be subject to change. Allsop is the trading name of Allsop LLP, a limited liability partnership registered in England and Wales with registered company number OC315531. CBRE is the trading name of CBRE Limited, a limited liability partnership registered in England and Wales with registered company number 3536032. December 2020.