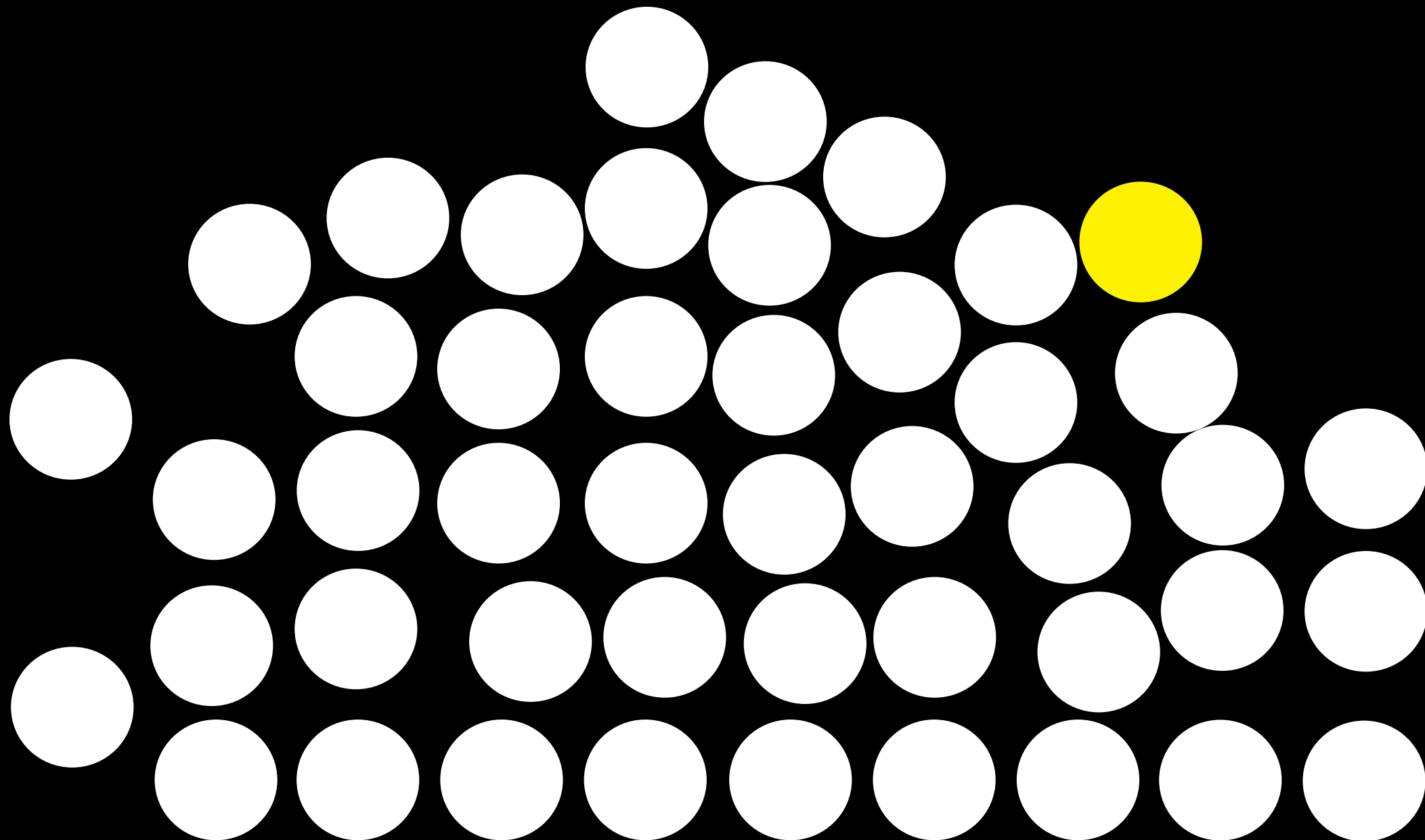


Republic

Import Building

Office Floor Plans



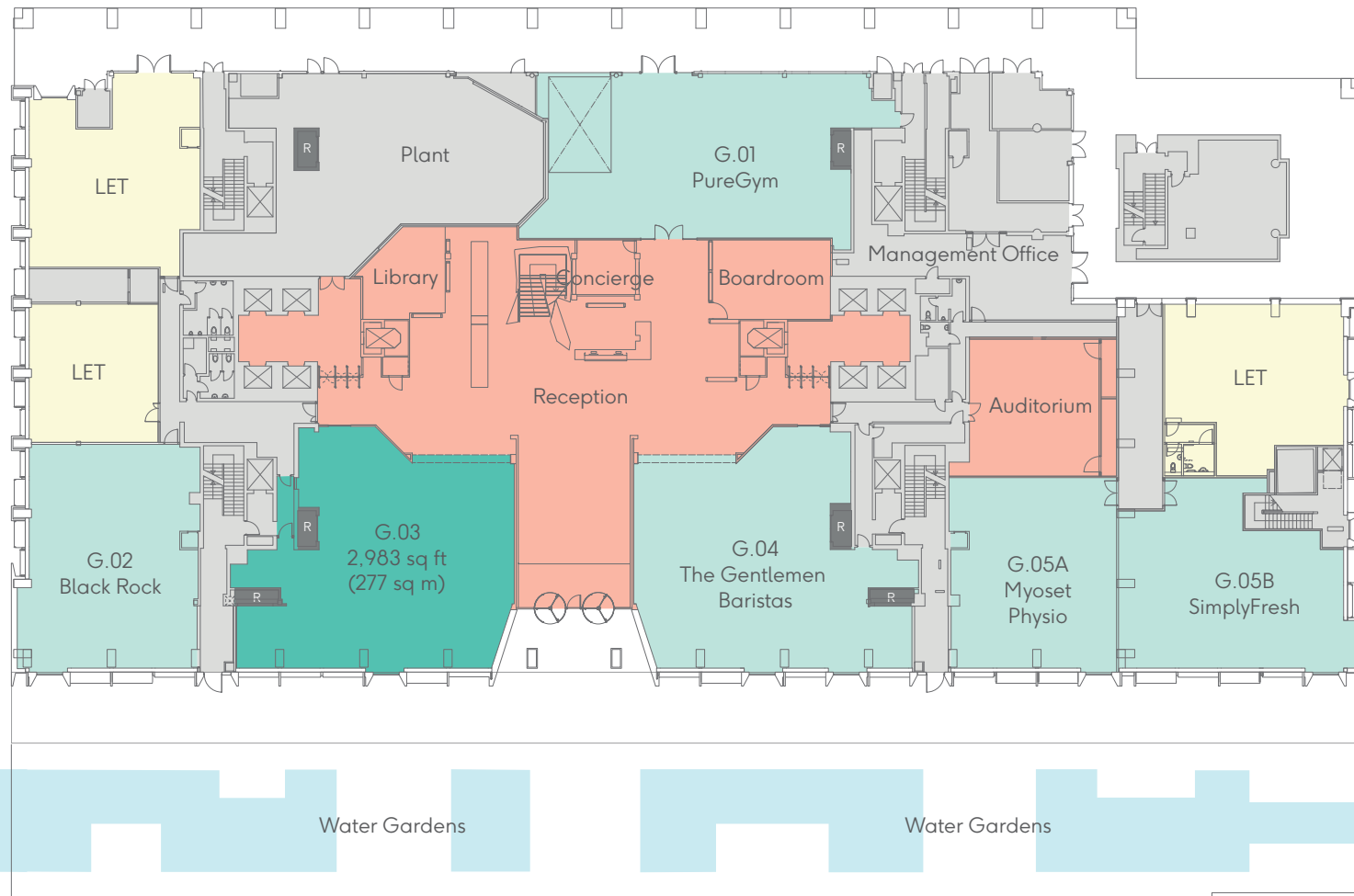
Schedule of Areas

9th (Terrace)	Office	8,028 sq ft	746 sq m	
Part 8th	Office	6,240 sq ft	579 sq m	
Part 7th (Terrace)	Office	Let	Let	
6th	Office	Let	Let	
5th	Office	Let	Let	
	Studios at Republic			
	Studio 1	1,905 sq ft	177 sq m	
	Studio 2	4,057 sq ft	377 sq m	
4th	Studio 3.2, 3.3, 3.5 (3.1 Let, 3.4 Under Offer)	2,390 sq ft	222 sq m	
	Studio 4	Let	Let	
4th	Office	Let	Let	
3rd	Office	Let	Let	
2nd	Office	Let	Let	
1st	Office	Let	Let	
Ground	Office	Let	Let	
	Retail Unit G.03	2,983 sq ft	277 sq m	
Total Office/Studios		22,620 sq ft	2,102 sq m	

- Studio 1 ●
- Studio 2 ●
- Studio 3 ●
- Under Offer Studio 3 ▨
- Let Studio 3 ●
- Available Office ●
- Let Office / Let Studio 4 ●
- Available Retail ●
- Let Retail ●
- Atrium ●
- Reception / Tenant Amenities ●
- Terrace ●
- Core ●

Ground

Retail G.03: 2,983 sq ft / 277 sq m



Let Office	●
Available Retail	●
Let Retail	●
Reception / Tenant Amenities	●
Risers	R
Core	●



5th

Studio 2

4,057 sq ft / 377 sq m

Studio 3

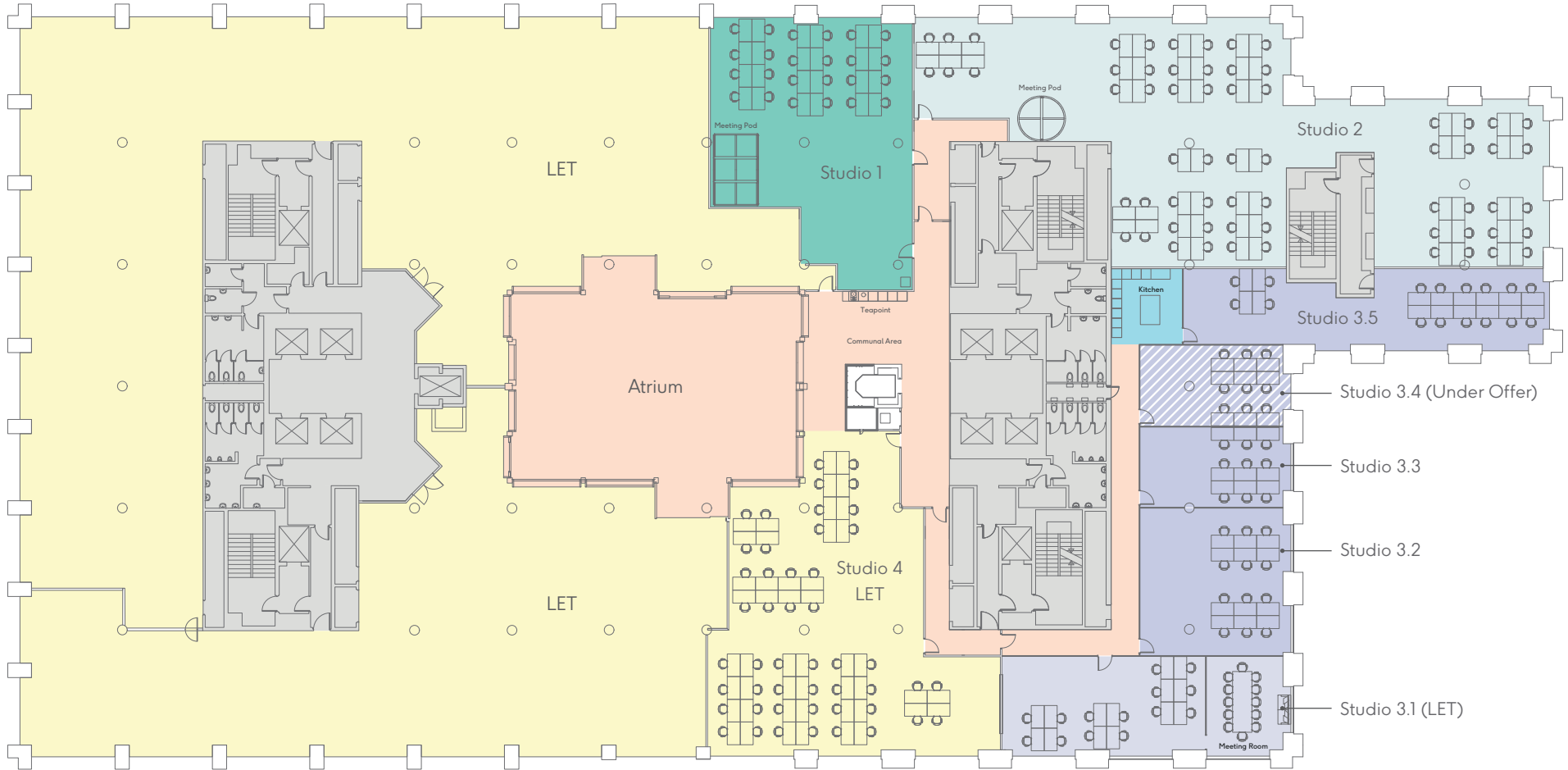
Studio 3.1: Let

Studio 3.2: 883 sq ft / 82 sq m

Studio 3.3: 441 sq ft / 41 sq m

Studio 3.4: Under Offer

Studio 3.5: 1,066 sq ft / 99 sq m

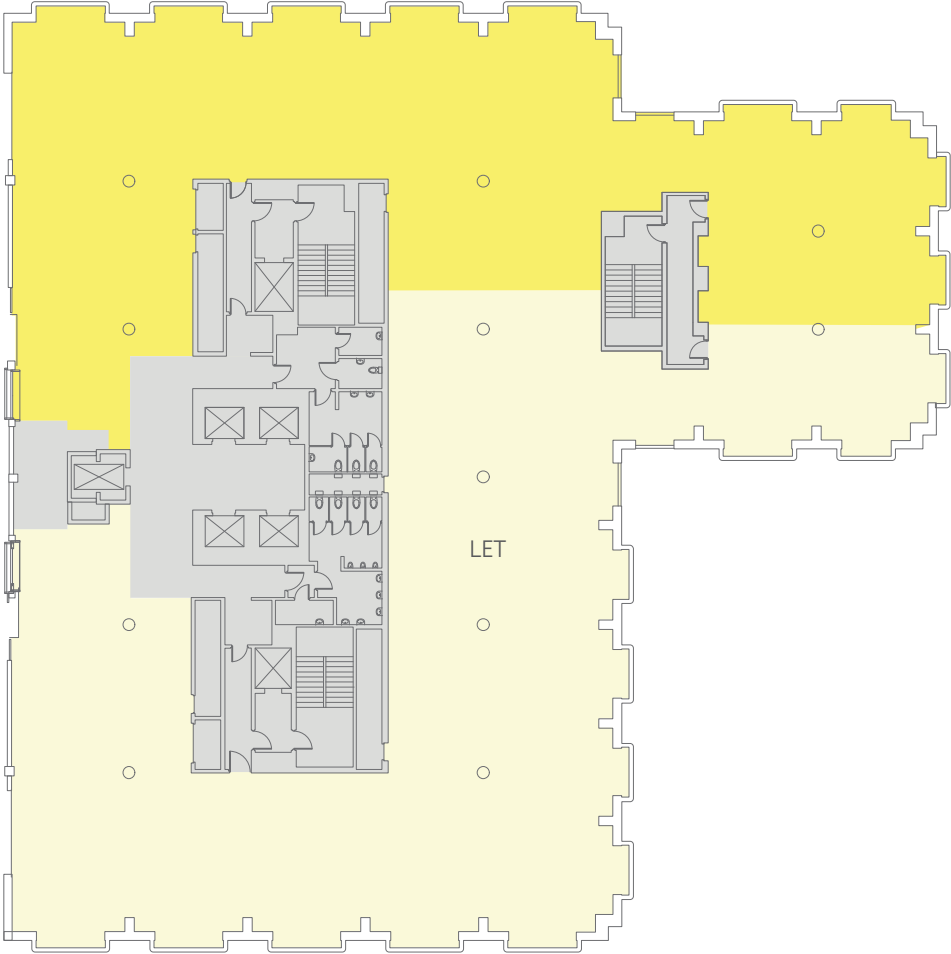


Studio 1	●	Studio 2	●	Under Offer Studio 3	■
Available Office	●	Studio 3	●	Atrium	●
Let Office / Let Studio 4	●	Let Studio 3	●	Core	●



8th

Office: 6,240 sq ft / 580 sq m

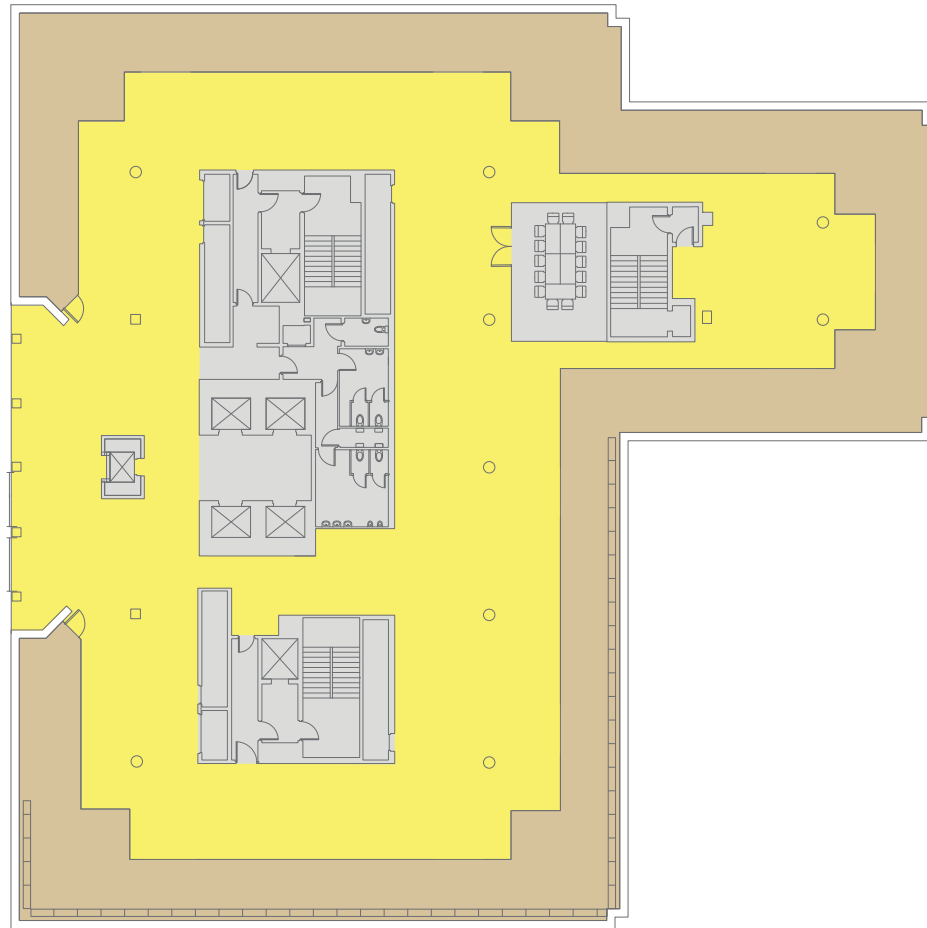


- Available Office ●
- Let Office ●
- Atrium ●
- Core ●



9th (Terrace)

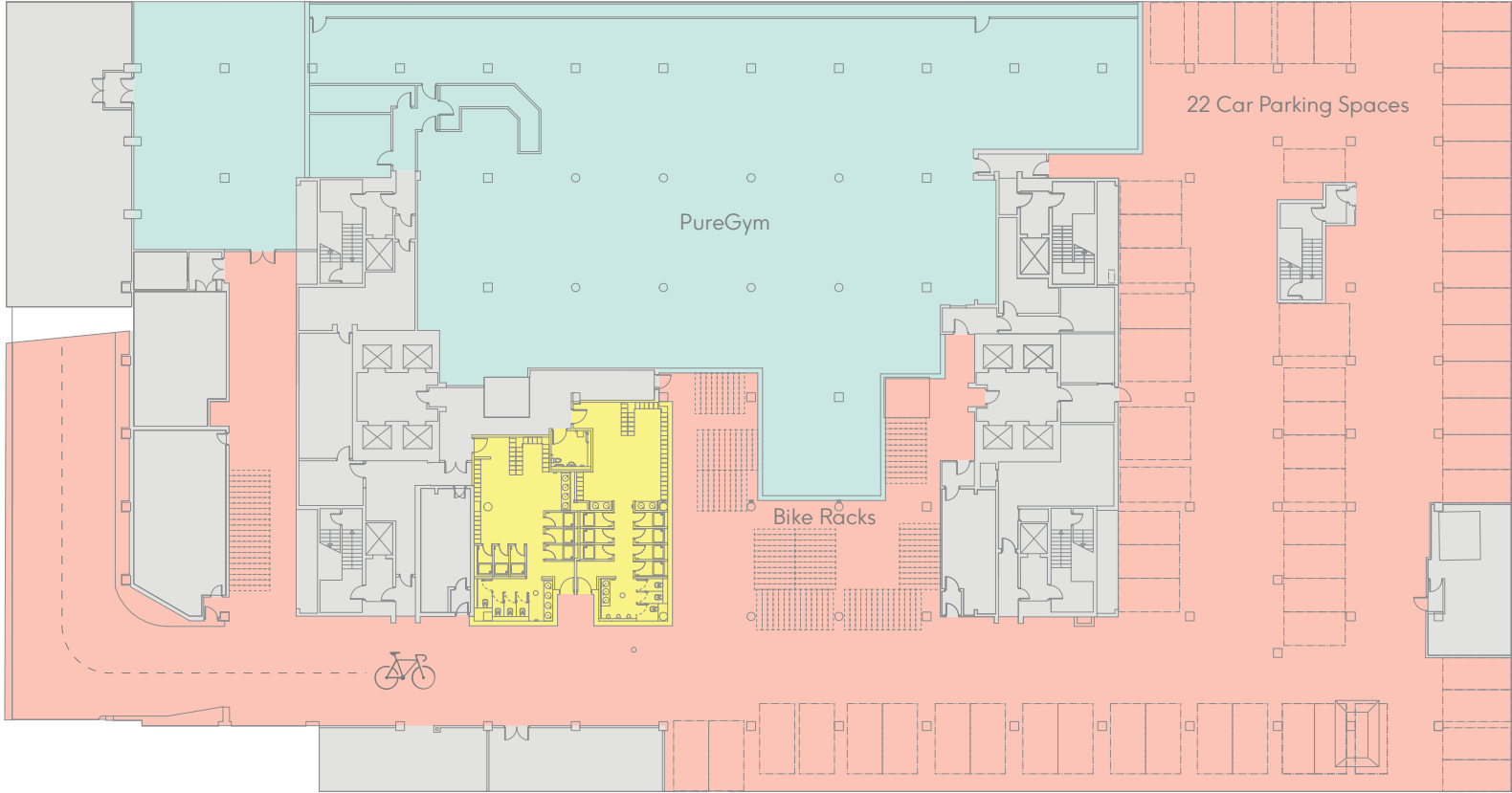
Office: 8,028 sq ft / 746 sq m



- Available Office ●
- Atrium ●
- Terrace ●
- Core ●



Basement



- Showers ●
- Let Retail ●
- Reception / Tenant Amenities ●
- Risers R
- Core ●



Contact Details

Office

CBRE

Luke Hacking
DL +44 (0) 20 7182 2169
M +44 (0) 7951 224 060
luke.hacking@cbre.com

—
Hannah Grint
DL +44 (0) 20 3257 6341
M +44 (0) 7545 868 543
hannah.grint@cbre.com

Allsop LLP

James Neville
DL +44 (0) 20 7588 4433
M +44 (0) 7789 658 540
james.neville@allsop.co.uk

—
Tom Nicoll
DL +44 (0) 20 7588 4433
M +44 (0) 7734 680 412
tom.nicoll@allsop.co.uk

Retail

CBRE

Steven Stedman
DL +44 (0) 20 7182 2712
M +44 (0) 7967 697 920
steven.stedman@cbre.com

—
Saul Fierstone
DL +44 (0) 20 7420 3013
M +44 (0) 7899 849 756
saul.fierstone@cbre.com

CF Commercial

Ben Reeve
DL +44 (0) 20 3216 3914
M +44 (0) 7808 904 683
ben@cfcommercial.co.uk

—
Jake Stace
DL +44 (0) 20 3216 3912
M +44 (0) 7597 685 889
jake@cfcommercial.co.uk

Fund Manager

LaSalle Investment Management

Developer

Trilogy

Architects

Studio RHE

Important Notice: 1. Particulars: The particulars are not an offer or contract, nor part of one. You should not rely on statements by Allsop or CBRE in the particulars or by word of mouth or in writing ("information") as being factually accurate about the property, its condition or its value. Neither CBRE or Allsop has any authority to make any representations about the property and accordingly any information given in entirety without responsibility on the part of the agents, seller (s) or lessor (s). 2. Photos etc: The photographs show only certain parts of the property as they appeared at the time they were taken. Areas, measurements and distances given are approximate only. 3. Regulations etc: Any references to alterations to, or use of, any part of the property does not mean that any necessary planning, building regulations or other consent has been obtained. A buyer or lessee must find out by inspection or in other ways that these matters have been properly dealt with and that all information is correct. CGIs are for indicative purposes only and may be subject to change. Allsop is the trading name of Allsop LLP, a limited liability partnership registered in England and Wales with registered company number OC315531. CBRE is the trading name of CBRE Limited, a limited liability partnership registered in England and Wales with registered company number 3536032. January 2022.